

# Projet : CD-LIVE

## **ADULLACT**

335 cour Messier

34000 Montpellier

Tél. : 04 67 65 05 88

Email : [contact@adullact.org](mailto:contact@adullact.org)

# SOMMAIRE

Introduction.....	3
II Les Pré-requis.....	3
III Les commandes importantes.....	4
III Les étapes de réalisation du CD-Live.....	6
IV Installation spécifique pour le CD-Live E-Mairie.....	10
1) Installation Apache.....	10
2) Installation d'un JDK.....	10
3) Installation de tomcat.....	10
Déploiement.....	10
Configuration.....	10
4) installation de python.....	12
5) Installation de zope.....	12
V ANNEXE A (listes des packages).....	14
VI ANNEXE B (le fichier 45xsession).....	34
VII ANNEXE C (fichier zope.conf).....	51

# Introduction

Ce document est la synthèse de toutes les procédures effectuées pour la réalisation du CD-Live E-Mairie. Il indique en détail quels fichiers ont été touchés, les scripts utilisés et les difficultés rencontrées. Le but de ce document est de réaliser un autre CD-Live avec beaucoup plus de facilité.

## I Les Pré-requis.

Pour réaliser le CD-Live de la E-Mairie voici les différents programmes nécessaire :  
Une image ISO Knoppix  
Script de décompression (annexe A)

On peut obtenir l'image iso Knoppix sur <http://kaella.linux-azur.org/index.php#telechargement>.

Les scripts sont tous sur le répertoire partagé //linux01/share/cd-live/scripts/. Ils sont aux nombres de 4 :

- decompress\_from\_iso.sh : Ce script décompresse l'arborescence à partir d'une image iso. Il prend l'image qui s'appelle source dans le répertoire ./knxiso/ du répertoire principal du cd-live.
- decompress\_from\_cd.sh : Ce script décompresse l'arborescence à partir d'un cd inséré dans le lecteur cd-rom de la machine. Il crée une image iso du cd qu'il appelle source dans le répertoire ./knxiso/ du répertoire principal.
- create\_iso.sh : Ce script compresse le répertoire de travail ./knxsource/ pour recréer le fichier KNOPPIX présent dans ./knxmaster/.
- do\_taillePkgDEBIAN.sh : Ce script met dans différents fichier les packages installés et désinstallés sur la KNOPPIX. Il suffit après d'injecter chaque catégorie de fichier dans un tableur.

Il est nécessaire d'utiliser aussi 2 fichiers bin indispensables pour réaliser la compression et la décompression de l'image iso :

- create\_compressed\_fs : Ce fichier binaire est l'algorithme de compression pour la KNOPPIX ;
- extract\_compressed\_fs : Ce fichier binaire est l'algorithme de décompression pour la KNOPPIX.

## II Les commandes importantes.

Voici les différentes commandes le plus souvent utiliser lors de la réalisation du CD Live.

### Commande d'installation de package

**Apt-get [commande] [nompkg]** : cette commande sert à installer et désinstaller les packages présents dans la knoppix.

Les utilisations principales sont les suivantes :

**Apt-get update** : Cette commande met à jour la base des serveurs qui fournissent les packages.

**Apt-get remove [nompkg]** : permet d'effacer un package.

**Apt-get install [nompkg]** : permet d'installer un package.

**Apt-get clean** : efface le cache. A faire avant de lancer la création d'un image iso.

### Commande de renseignement sur un package

**Apt-cache** : permet de connaître les informations d'un package.

**Apt-cache show nompkg**

### Commande d'installation de package externe et énumération des packages

**Dpkg** : permet de voir et d'installer des packages fichiers.

**Dpkg -l** : permet de voir les packages installés.

**Dpkg -i [nompkg]** : installe un package.

### Commande d'exécution root

**Sudo [commande]** : cette commande permet de lancer une autre commande comme root.

### Commande de création de system unix dans une arborescence

**Chroot [répertoire]** : permet de créer un environnement unix dans une arborescence de répertoire.

### Commande de recherche de fichier

**Find** : permet de chercher un fichier.

**Find / -name "toto"** : cherche à partir de la racine tous les fichiers toto.

### Commande de conversion de package

**Alien [package]** : permet de convertir un package .rpm en .deb (débian)

### Commande de calcul d'espace disque

**Du** : permet de connaître la taille des fichier en ko.

**Du -sk** : donne le nombre de ko utilisé.

**Commande de montage de disque**

**Mount** : permet de monter une partition.

**Commande de démontage de disque**

**Umount** : permet de démonter une partition.

# III Les étapes de réalisation du CD-Live.

## 1) Création d'un répertoire de travail

On ne peut pas travailler directement sur l'image compressée de la knoppix. Il faut décompresser le fichier KNOPPIX et déployer le système de fichier sur un ordinateur. Pour se faire, il faut créer un environnement de travail où les différents scripts pourront agir. Dans une arborescence du système créez un répertoire knoppix (ex : /var/knoppix/)

A l'intérieur créez les répertoires suivants :



- Knxiso : répertoire contenant les différentes images iso.
- Knxmaster : répertoire contenant la partie externe du cd. (partie non compressé)
- Knxsource : répertoire contenant la partie interne du cd. (Partie compressé)
- Knxmnt : répertoire rattaché à l'image iso ou au cd-rom knoppix qu'on veut exploité (lors de la décompression)
- Bin : répertoire contenant tous les script cité plus haut.

Puis à la racine du système faite un lien vers le répertoire de travail par exemple :

```
cd /
Ln -s /var/knoppix/ knoppix
```

Lorsque la mise en place de cette arborescence est terminée, copiez tous les scripts dans le répertoire ./bin/.

Ici 2 solutions s'offre à vous :

- Soit vous possédez une image iso de la knoppix dans quel cas :  
Copiez l'image iso knoppix dans le répertoire ./knxiso/ et renommez la : source.iso. Puis lancer le script `decompress_from_iso.sh`
- Soit vous possédez un cd-rom de la knoppix dans quel cas :  
Mettez le cd-rom dans le lecteur et lancer le script `decompress_from_cd.sh`.

Voilà votre répertoire de travail est enfin prêt. Nous travaillerons uniquement dans ce répertoire jusqu'à la fin de ce document.

## 2) Modifier l'arborescence KNOPPIX

Pour modifier la KNOPPIX selon vos besoins vous devez rentrer dans le répertoire knxsource et taper :

Chroot KNOPPIX

Ainsi vous créez un système Unix basé sur l'arborescence de la knoppix. A partir de ce nouvel environnement il sera donc possible d'installer et de désinstaller de nouveaux package. Vous pourrez trouver en annexe A la liste des packages installé et désinstallé pour la knoppix. Cette liste à été obtenu grâce au script : do\_taillePkgDEBIAN.sh sur la knoppix kealla 1.5beta.

On peut constater plusieurs phases durant la modification de l'arborescence. Chacune intervient à un moment bien précis dans la phase de refonte du cd de la knoppix. Si les étapes sont suivie comme suit, un gain de temps non négligeable sera gagné pour perfectionné la phase de packaging par exemple.

## 3) Libérer de l'espace

Comme l'arborescence devra tenir compressé sur un cd, il faut désinstaller les package inutile. LaListe des packages est présent en annexe A. c'est grâce à la commande apt-get remove que ces packages sont facile à retirer.

Il n'existe aucun moyen d'estimer la taille finale compressée sur le cd à moins de créer l'image à chaque fois.

## 4) Le démarrage du cd-live

Après avoir installé tous les différents serveurs web à l'aide de apt-get ou de dpkg, ils doivent démarrer dès le lancement du cd. Pour ce faire, dans le répertoire etc on trouve les dossiers suivants :

- rc0.d
- rc1.d
- rc2.d
- rc3.d
- rc4.d
- rc5.d
- rc6.d

Chacun de ces répertoires correspond à un type de démarrage de linux. Ici ceux qui nous interrent sont :

- rc5.d : qui s'occupe du démarrage en mode graphique ;
- rc6.d : qui s'occupe de la fermeture de session.

Pour faire fonctionner le système de démarrage automatique, il faut créer un lien symbolique vers le script de démarrage du démon. Il doit être écrit de la manière suivante :

- Il doit commencer par S si on souhaite le démarrer ou par K si on souhaite le tuer.
- Un ordre de démarrage compris entre 00 (premier à démarrer) et 99 (dernier à démarrer).
- Enfin un identifiant pour le distinguer des autres démarrages.

Ex dans le répertoire rc5.d :  
Ln -s /etc/init.d/apache S20apache  
Ex dans le répertoire rc6.d :  
Ln -s /etc/init.d/apache K20apache

ATTENTION : pour tous les démons démarrer dans rc5.d il doit figurer aussi dans 5c6.d pour être tué.

## 5) Création de session automatique.

L'une des particularités de la knoppix, comparé aux autres distributions, est son démarrage sur un support non enregistrable. De ce fait, c'est lors du démarrage que la création d'une session utilisateur est faite. C'est le fichier /etc/X11/Xsession.d/45xsession (en annexe B) qui s'occupe de la création de la session utilisateur knoppix.

Si des opérations doivent être effectués pendant le démarrage, c'est dans ce fichier qu'elles devront être décrites.

Voici la partie qui a été modifié à la ligne 160 :

```
#if [ -e "$INDEXFILE" ]; then  
#cat >> $HOME/Desktop/KNOPPIX.desktop <<EOF  
#[Desktop Entry]  
#Name=KNOPPIX  
# Exec=firefox openProfile webbrowsing $INDEXFILE  
#Exec=firefox http://localhost/  
#Type=Application  
#Icon=html  
#Terminal=0  
#EOF  
ln $HOME/Desktop/accueil.desktop $HOME/.kde/Autostart/showindex.desktop  
#fi
```

## 6) Le packaging

Voici la liste des différents fichiers et leur importance au niveau du packaging. Ce sont eux qui mettent en forme le bureau et les différents bookmarks pour mozilla et konqueror.

/etc/skel/.kde/share/config/kdeglobals : Ce fichier s'occupe de la configuration globale du bureau

/etc/skel/.kde/share/config/kwinrc : Ce fichier s'occupe de la configuration des fenêtres (keramik)

/etc/skel/.kde/share/config/kwinkeramikrc : Ce s'occupe de la configuration du thème keramik

/etc/skel/.kde/share/config/kickerrc : Ce fichier s'occupe de la barre rapide de kde

/etc/X11/Xsession.d/45xsession : C'est le fichier créateur de session knoppix déjà abordé



précédemment.

/usr/share/knoppix/profile/.mozilla/firefox/3d4ef4xp.default/prefs.js : C'est le fichier de préférence de mozilla fire-fox.

/cdrom/KNOPPIX/background.jpg : c'est le fichier image utilisé comme image de fond du bureau

/usr/share/apps/ksplash/Themes/Default/splash\_top.png : c'est le splashscreen au démarrage de kde

/etc/skel/.mozilla/knoppix/ujixazk6.slt/bookmarks.html : Ce fichier est le bookmark de mozilla.

/etc/skel/.kde/share/apps/konqueror/bookmarks.xml : Ce fichier est le bookmark de konqueror

## 7) La phase de test.

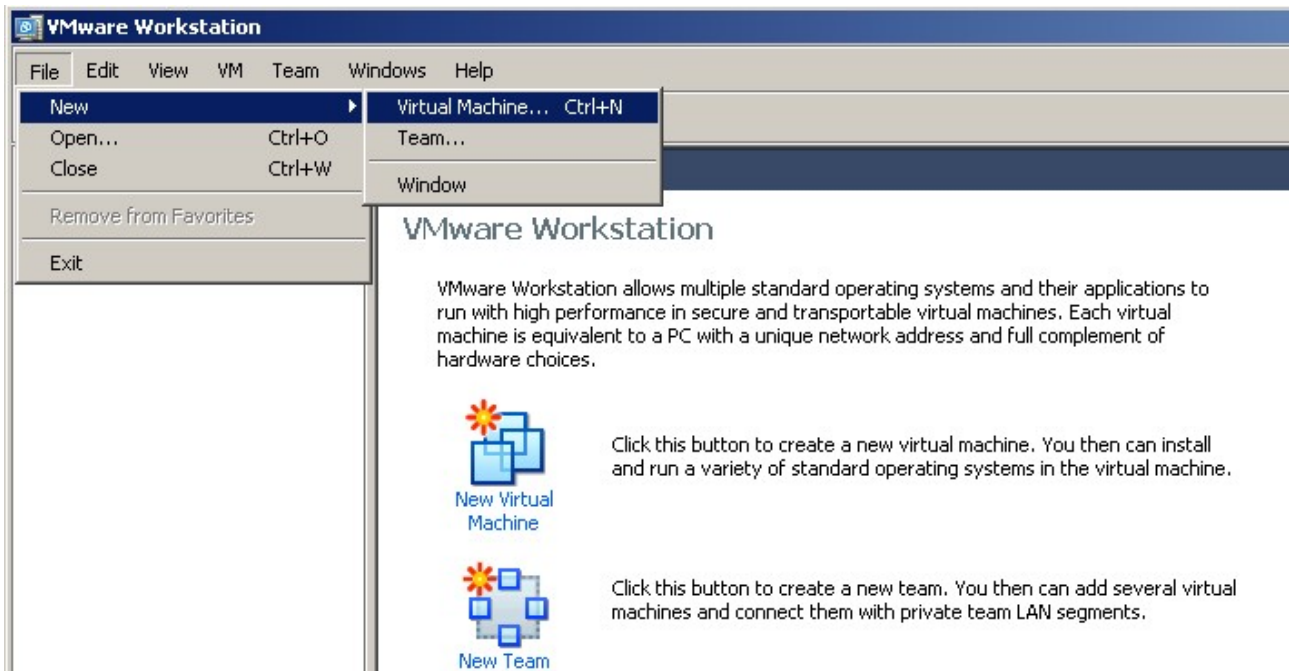
Pour réaliser une phase de test sans avoir à graver à chaque fois le cd, il est possible d'utiliser un logiciel d'émulation de système d'exploitation.

Avec Qemu, de nombreux problèmes de lenteurs et d'instabilités sont rencontrés. Le lancement de l'image iso prend 20 minutes! Il est plus rapide de graver et de tester le CD-Live que de perdre tant de temps.

Sinon l'autre solution est d'utiliser VMWARE. Ici j'explique brièvement quels sont les quelques réglages à faire pour le fonctionnement de ce logiciel avec une image iso du cd-live.

Lorsque vous lancez VMWARE vous obtenez cette fenêtre. Allez dans File->New->Virtual Machine..

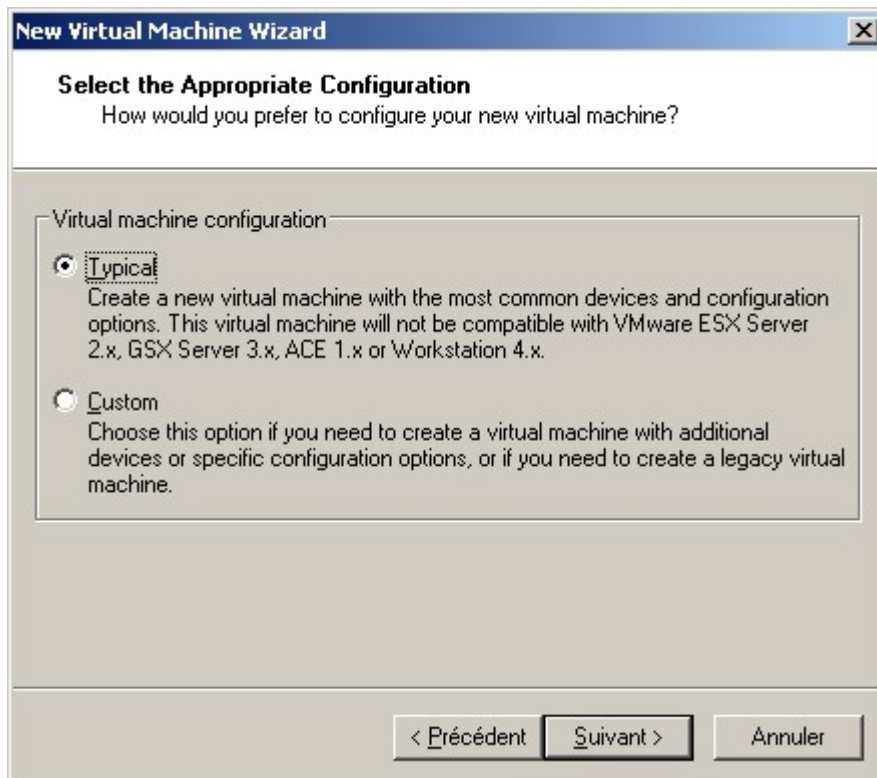
1



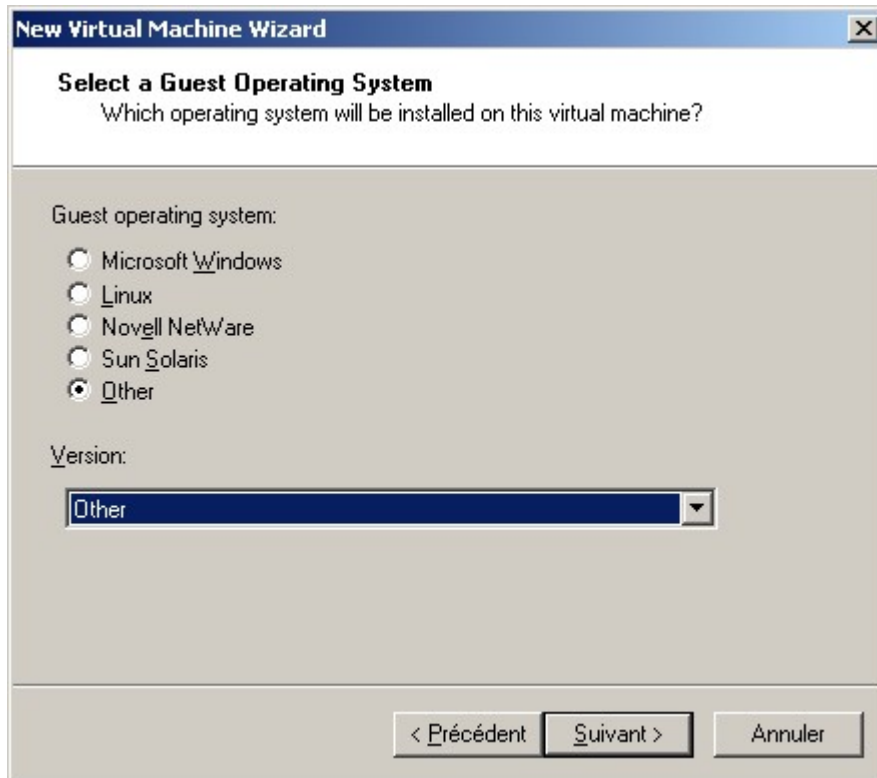
La un wizard apparaît pour vous aider à la création d'une machine virtuelle :



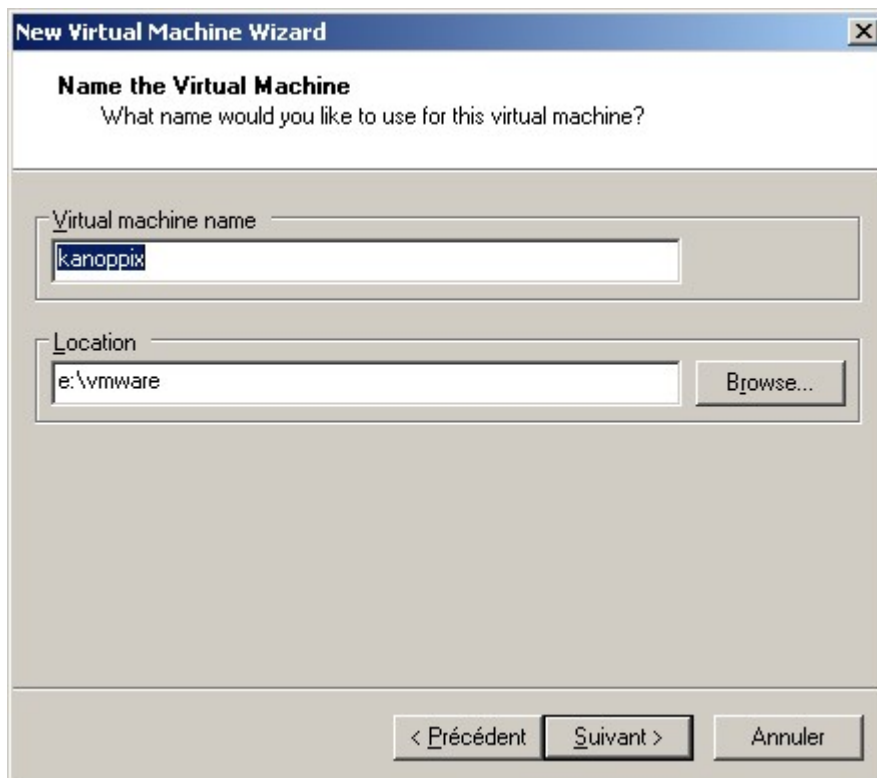
cliquez sur Suivant. Choisissez une configuration Typical pour créer la machine virtuelle Knoppix.



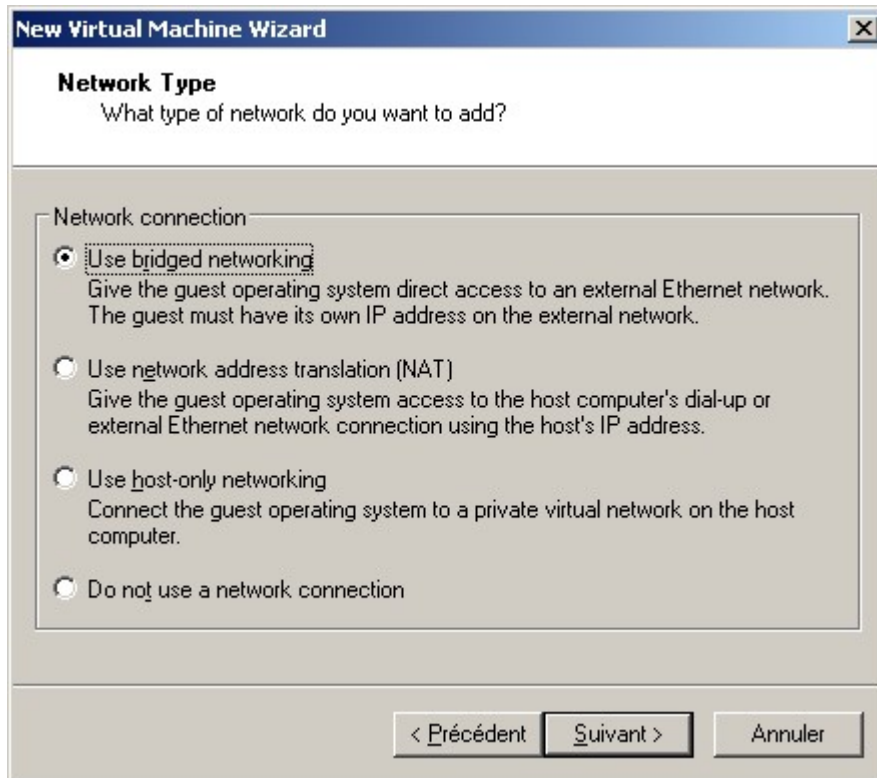
Cliquez sur suivant. A cette nouvelle fenêtre choisissez comme système d'exploitation other et comme version other aussi. Ainsi VMWare ne simulera qu'une machine qui démarre le cd-live fera le reste.



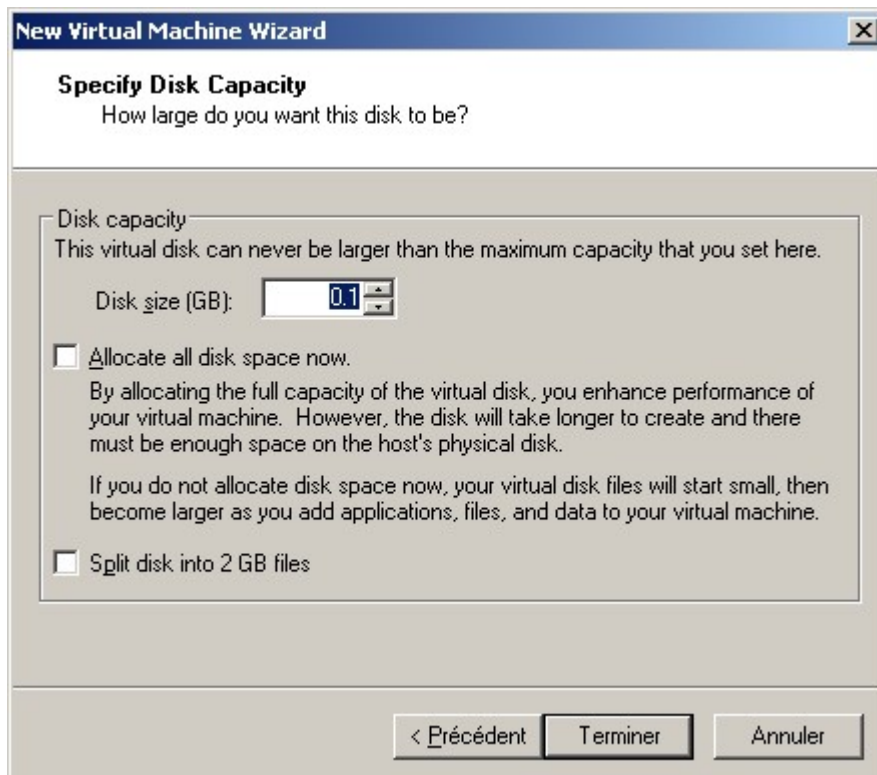
Cliquer sur suivant. Entrez un nom de machine et un chemin d'accès sur votre disque.



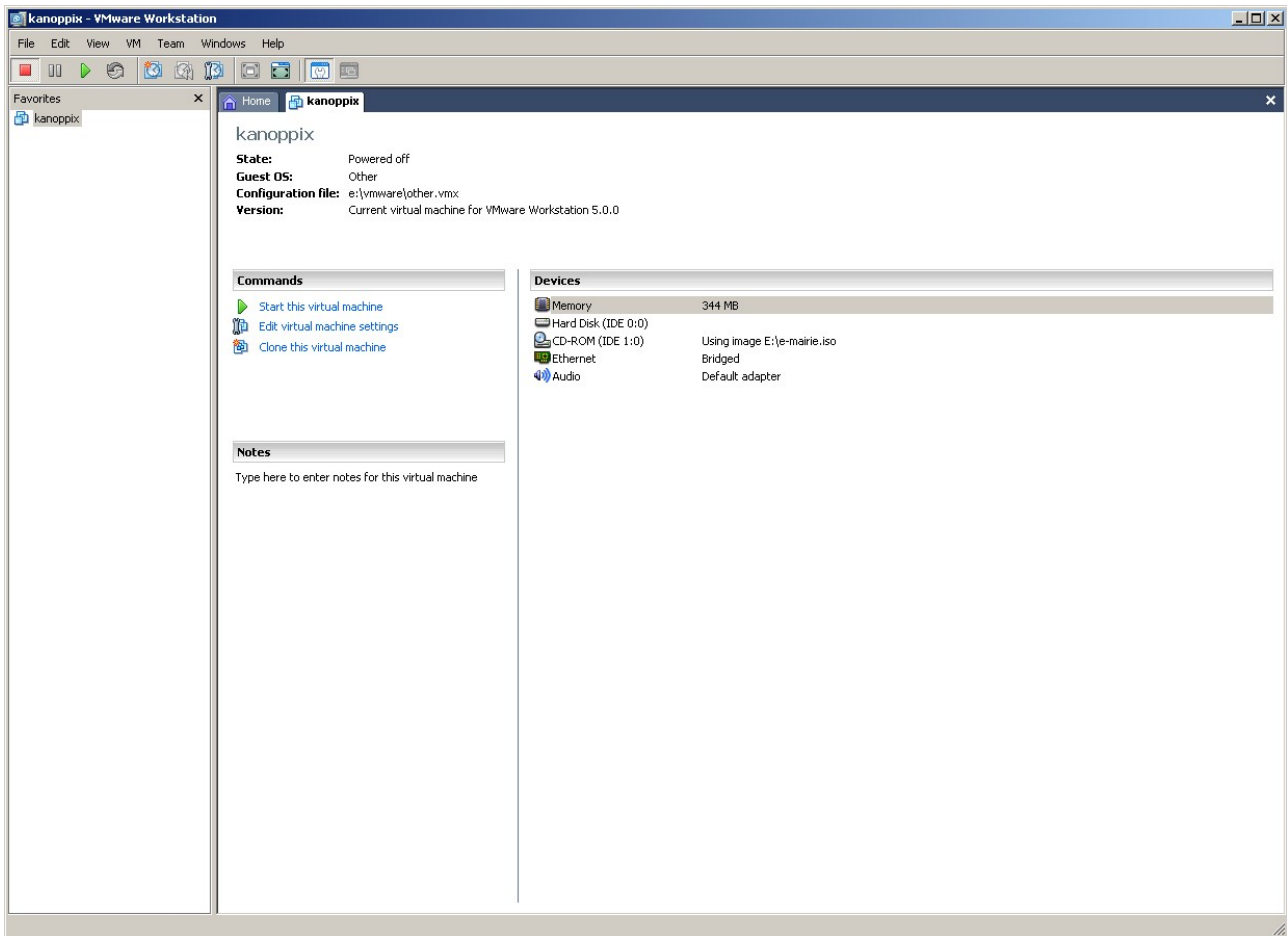
Cliquez sur suivant. Ici pour la simulation de carte réseau choisissez bridged networking. Il simulera une connection interne à votre carte réseau de votre machine.



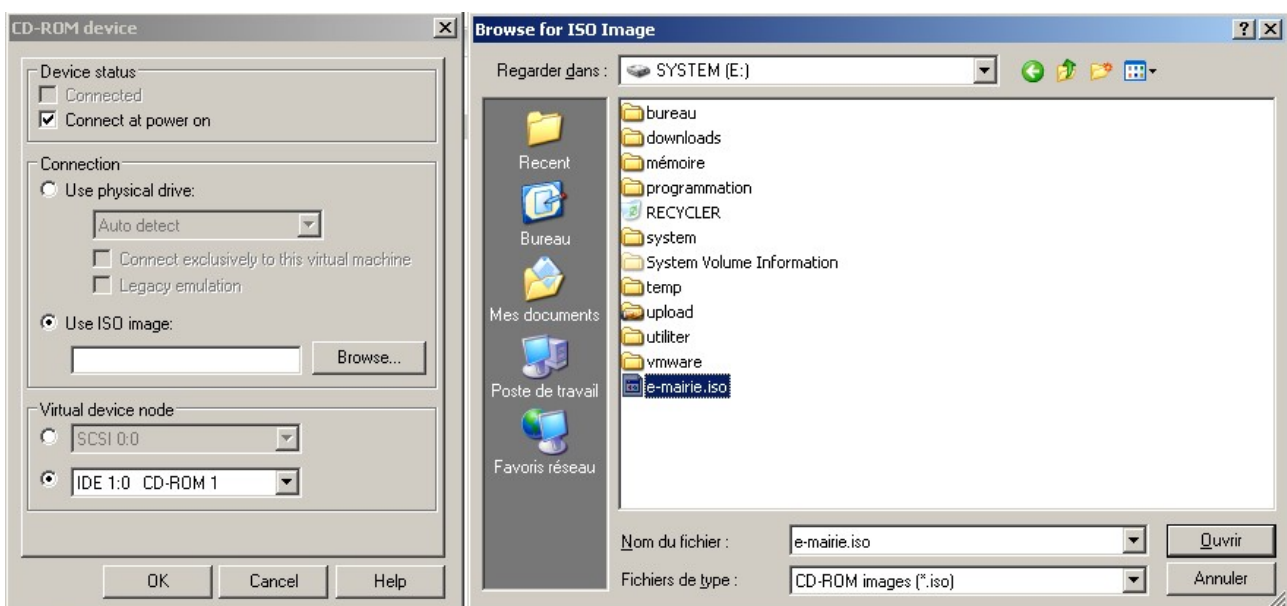
Cliquez sur suivant. Ici mettez la taille minimum de disque car la knoppix n'a pas besoin de hd.



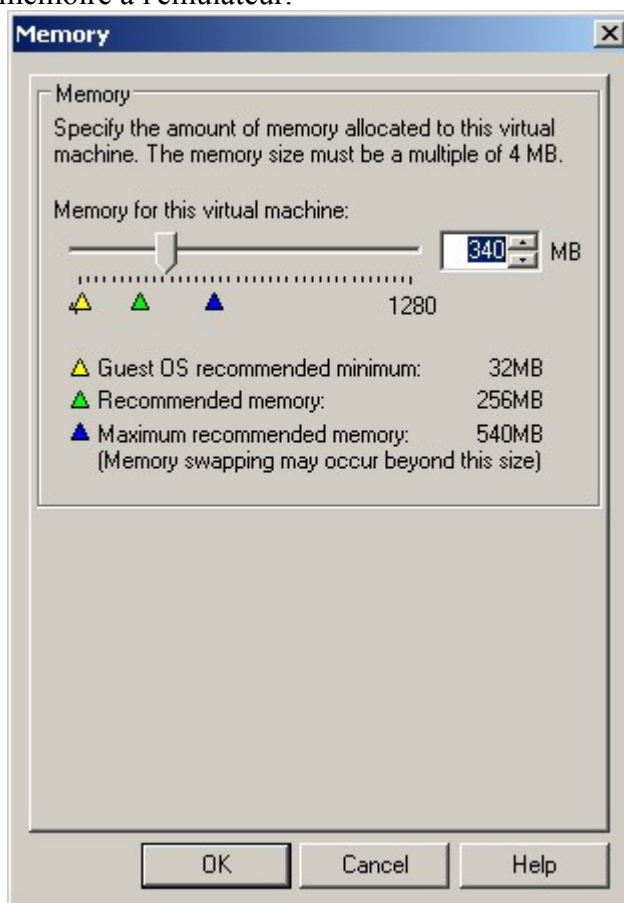
Cliquez sur Terminer. Sur la fenêtre de votre machine virtuelle cliquez 2 fois sur le cd-rom.




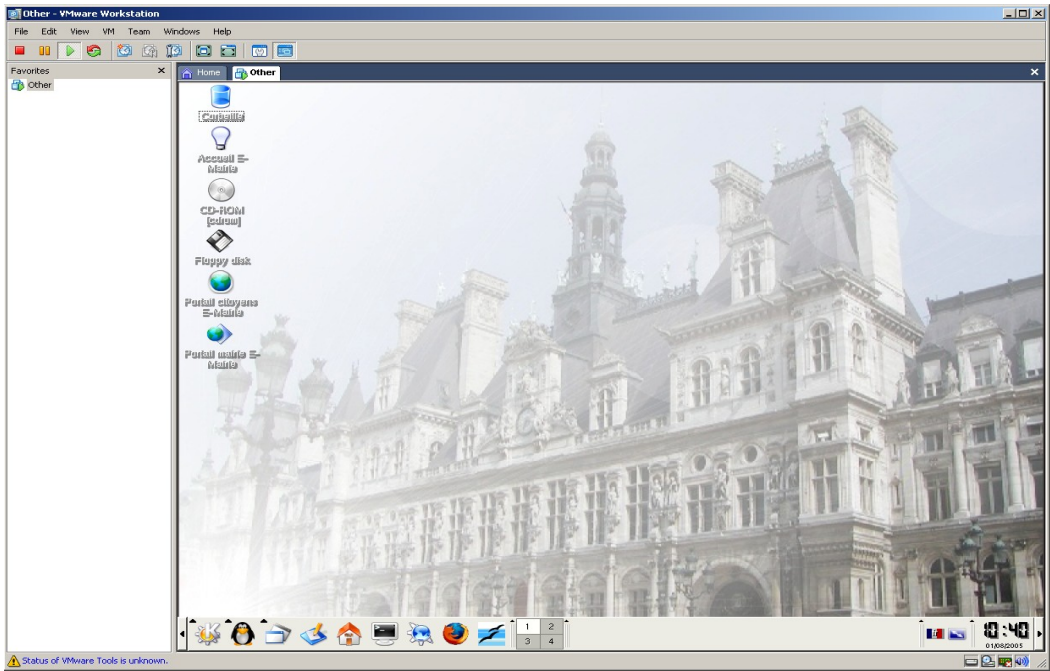
Cliquez sur use image iso et faite Browse. Allez chercher l'image iso généré par les scripts décrits plus haut.



Validez. Sur la fenêtre principale, cliquez 2 fois sur la mémoire. Par défaut elle est à 256Mb mais cela peut-être insuffisant si vous installez des serveur très gourmand sur la knoppix. Donnez au moins la moitié de votre mémoire à l'émulateur.



Faite Ok. Enfin il ne vous reste plus qu'à cliquer sur  [Start this virtual machine](#) et la machine se lance.



# IV Installation spécifique pour le CD-Live E-Mairie

## 1 Installation Apache

Apache est installé d'origine sur la knoppix. Il ne sert à rien de la désinstaller elle convient très bien pour tous les logiciels.

### 1) Installation d'un JDK

Allez sur le site de sun pour telecharger la dernière jdk :

<http://java.sun.com/j2se/1.5.0/download.jsp>

Choisissez la SDK pas la JRE sans quoi tomcat ne pourra pas compiler les jps.

```
cd /usr/local/src
chmod +x j2sdk-1_4_2-linux-i586.bin
./j2sdk-1_4_2-linux-i586.bin
mv j2sdk1.4.2/ /usr/local
cd /usr/local
ln -s j2sdk1.4.2/ jdk
```

Testons:

```
jdk/bin/java
```

```
Usage: java [-options] class [args...]
```

Ca fonctionne !

### 2) Installation de tomcat

#### Déploiement

Si vous utilisez un jdk1.4, il faut la version "LE" de tomcat (c'est à dire sans certaines librairies qui sont déjà incluses dans le jdk). Nous appliquerons également le patch de sécurité. Vous pouvez trouver un autre miroir à cette adresse

[http://jakarta.apache.org/site/downloads/downloads\\_tomcat-4.cgi](http://jakarta.apache.org/site/downloads/downloads_tomcat-4.cgi).

```
cd /usr/local/src
wget http://apache.crihan.fr/dist/jakarta/tomcat-4/v4.1.29/bin/jakarta-tomcat-4.1.29-LE-jdk14.tar.gz
tar -xzf jakarta-tomcat-4.1.29-LE-jdk14.tar.gz -C /usr/local
cd /usr/local
ln -s jakarta-tomcat-4.1.29-LE-jdk14/ tomcat
```

#### Configuration

Faire fonctionner tomcat en utilisateur 'root' n'est pas une bonne idée. Créez un utilisateur tomcat et attribuez lui le répertoire /usr/local/tomcat

```
groupadd tomcat
```



```
useradd -g tomcat -d /usr/local/tomcat tomcat
chown -R tomcat:tomcat jakarta-tomcat-4.1.29-LE-jdk14/
chmod 770 jakarta-tomcat-4.1.29-LE-jdk14/
```

Voici le script de démarrage / arrêt qui s'appelle /etc/init.d/tomcat (notez le "/bin/su" pour faire tourner tomcat sous un autre utilisateur que celui qui le lance):

```
#!/bin/bash
#
# tomcat Start the tomcat server.
#

NAME="Jakarta Tomcat 4.1.29"
TOMCAT_HOME=/usr/local/tomcat
CATALINA_HOME=/usr/local/tomcat
JAVA_HOME=/usr/local/jdk
CATALINA_OPTS="-Dfile.encoding=iso8859-1"
TOMCAT_USER=tomcat
export TOMCAT_HOME CATALINA_HOME JAVA_HOME CATALINA_OPTS
TOMCAT_USER
cd $TOMCAT_HOME/logs
case "$1" in
  start)
    echo -ne "Starting $NAME.\n"
    /bin/su $TOMCAT_USER $TOMCAT_HOME/bin/startup.sh
    ;;

  stop)
    echo -ne "Stopping $NAME.\n"
    /bin/su $TOMCAT_USER $TOMCAT_HOME/bin/shutdown.sh
    ;;

  *)
    echo "Usage: /etc/init.d/tomcat {start|stop}"
    exit 1
    ;;
esac

exit 0
```

Note: le paramètre CATALINA\_OPTS sert à avoir les caractères accentués dans les jsp, car j'ai eu des cas où ça ne fonctionnait pas sans ce paramètre.

Rendons le fichier exécutable:

```
chmod 700 /etc/init.d/tomcat
```

et démarrez tomcat:

```
/etc/init.d/tomcat start
Starting Jakarta Tomcat 4.1.29.
Using CATALINA_BASE: /usr/local/tomcat
```

Using CATALINA\_HOME: /usr/local/tomcat  
Using CATALINA\_TMPDIR: /usr/local/tomcat/temp  
Using JAVA\_HOME: /usr/local/jdk  
Testez http://localhost:8080 pour vérifiez que cela fonctionne.

Pour arrêter tomcat:

```
/etc/init.d/tomcat stop
```

Si vous avez beaucoup d'applications et / ou une machine lente, le démarrage et l'arrêt de tomcat peuvent prendre plusieurs minutes.

Nous allons également faire démarrer tomcat en même temps que la machine. Sous Knoppix :

```
update-rc.d tomcat defaults 50
```

## 2 installation de python

Il suffit juste d'installer grâce à apt-get la version 2.3. Le package se nomme python2.3. Tout sera installé sans avoir besoin de configurer quoi que ce soit.

### 3) Installation de zope

Vous trouverez zope à cette adresse : <http://www.zope.org/Products/> .  
Les serveur Zope tournera avec l'utilisateur zope du groupe zope :  
Pour la création en utilisateur root :

```
useradd zope
```

Vous devez être connecté en root pour l'exécution des commandes suivantes.

Il faut que vous décompressiez l'archive :  
\$ tar -xzf Zope-2.7.5-final.tgz /usr/lib/Zope-2.7.5/

Puis il va falloir compiler et installer Zope sur le système (installation dans /opt/Zope-2.7.5)

```
$ cd /usr/lib/Zope-2.7.5  
$ ./configure --prefix=/opt/Zope-2.7.5/  
$ make && make install  
$ chown zope.zope /opt/Zope-2.7.5 -R
```

Puis viens la création d'une instance de Zope dans /var/Zope.  
Les commandes suivantes doivent être exécutées en utilisateur zope.

```
$ cd /home/zope  
$ su zope  
$ /opt/Zope-2.7.5/bin/mkzopeinstance.py
```

1. renseigner la destination (/var/zope/instance)
2. Login administrateur : admin
3. Mot de passe administrateur : admin

Nous allons maintenant configurer le serveur Zope.  
les extraits du fichier de configuration correspondant se trouve en annexe C

Voici les principales caractéristiques de la configuration :

1. 6 threads – (zserver-thread 6)
2. Pas de mode debug (debug-mode off)
3. Port 9080 au lieu de 8080
4. Pas de serveur Ftp ouvert pour Zope
5. Effective-user zope.
6. Ajouter la locale fr\_FR pour l'encodage.

Enfin il y'a le démarrage automatique de Zope au démarrage de knoppix.

Il faut ensuite placer /var/zope/instance/bin/zopectl fichier dans /etc/init.d/ :

```
In -s /var/zope/instance/bin/zopectl /etc/init.d/
```

Puis, enregistre le service pour un démarrage en runlevel 3

```
$ cd /etc/init.d/  
$ chkconfig --add zopectl  
$ chkconfig --level 3 zopectl on
```

Vous pouvez tester le script de la façon suivante en root :

```
$ /etc/init.d/zopectl start
```

## V ANNEXE A (listes des packages)

inst	nom du package	version	commentaire	taille
rc	libwine	0.0.20050310-1	Windows Emulator (Library)	40108
ii	kde-i18n-fr	3.3.2-1	French (fr) internationalized (i18n) files f	31044
rc	openoffice.org	1.1.3-8	high-quality office productivity suite	28944
rc	openoffice.org	1.1.3-8	OpenOffice.org office suite binary files	28944
rc	openoffice.org	1.1.3-8+1	Debian specific parts of OpenOffice.org	28944
rc	openoffice.org	1.1.3-8	French language package for OpenOffice.org	28944
ii	kdelibs-data	3.3.2-1	KDE core shared data	23700
ii	kdelibs4	3.3.2-4.0.2	KDE core libraries	23440
rc	gimp-data	2.2.3-2	Data files for The GIMP	19032
rc	inkscape	0.41-2	vector based drawing program	17028
ii	kcontrol	3.3.2-1	KDE Control Center	16388
ii	cupsys	1.1.23-4	Common UNIX Printing System(tm) - server	15928
ii	libc6	2.3.2.ds1-21	GNU C Library: Shared libraries and Timezone	15548
ii	xlibmesa-dri	4.3.0.dfsg.1-1	Mesa 3D graphics library modules [XFree86]	13996
ii	vim-common	6.3-058+1	Vi IMproved - Common files	13376
rc	scribus	1.2.1-1	free software desktop page layout program	13080
rc	gs-esp	7.07.1-9	The Ghostscript PostScript interpreter - ESP	12008
rc	nessus-plugins	2.2.3-1	Nessus plugins	11060
ii	perl	5.8.4-6	Larry Wall's Practical Extraction and Report	11052
ii	perl-modules	5.8.4-6	Core Perl modules	10716
ii	locales	2.3.2.ds1-21	GNU C Library: National Language (locale) da	10372
ii	python2.3	2.3.5-3	An interactive high-level object-oriented la	9400
rc	libxine1	1.0-1	the xine video/media player library, binary	9008
ii	libc6-dev	2.3.2.ds1-21	GNU C Library: Development Libraries and Hea	8660
rc	mysql-server	4.0.24-2	mysql database server binaries	8604
rc	kbear	2.1.1-7	graphical ftp client for KDE	8596
rc	gimp	2.2.3-2	The GNU Image Manipulation Program	8156
ii	glibc-doc	2.3.2.ds1-20	GNU C Library: Documentation	8140
rc	gs-gpl	8.01-5	The GPL Ghostscript PostScript interpreter	7832
rc	gaim-data	1.1.4-2	multi-protocol instant messaging client - da	7736
ii	kdebase-data	3.3.2-1	KDE Base (shared data)	7592
ii	xlibs-data	4.3.0.dfsg.1-1	X Window System client data	7484
ii	libqt3c102-mt	3.3.3-8	Qt GUI Library (Threaded runtime version), V	7424
rc	blender	2.34-1	Very fast and versatile 3D modeller/renderer	7280
ii	coreutils	5.2.1-2	The GNU core utilities	7096
ii	libssl-dev	0.9.7e-2	SSL development libraries, header files and	7068
ii	kdelibs4-dev	3.3.2-4.0.2	KDE core libraries (development files)	6952
rc	libsane	1.0.15-6	API library for scanners	6936
ii	k3b-i18n	0.11-2	Internationalized (i18n) files for k3b	6764
ii	xfonts-base	4.3.0.dfsg.1-1	standard fonts for X	6756
ii	kicker	3.3.2-1	KDE Desktop Panel	6292
rc	kdevelop3-data	3.1.1-2	An IDE for Unix/X11 - data	6248
rc	kstars	3.3.1-3	desktop planetarium for KDE	6244
ii	smbclient	3.0.10-1	a LanManager-like simple client for Unix	6208
ii	samba	3.0.10-1	a LanManager-like file and printer server fo	6088
ii	php4-cgi	4.3.10-13	server-side, HTML-embedded scripting languag	6024
rc	xmms	1.2.10-2	Versatile X audio player that looks like Win	6024

ii	binutils	2.15-5	The GNU assembler, linker and binary utilities	5972
rc	kmail	3.3.1-3	KDE Email client	5968
rc	amule	1.2.6+rc7-2	aNOTHER eMule P2P Client	5916
rc	libwxgtk2.4	2.4.2.6	wxWindows Cross-platform C++ GUI toolkit (GTK)	5620
rc	tuxtype	1.0-4	Educational Typing Tutor Game Starring Tux	5456
ii	xfonts-100dpi	4.3.0.dfsg.1-1	100 dpi fonts for X	5436
rc	imagemagick	6.0.6.2-2.1	Image manipulation programs	5200
ii	dpkg	1.10.27	Package maintenance system for Debian	5116
ii	gsfonts	8.14+v8.11-0.1	Fonts for the Ghostscript interpreter(s)	5080
ii	xbase-clients	4.3.0.dfsg.1-1	miscellaneous X clients	5076
rc	synaptic	0.55+cvs200502	Graphical package manager	5000
ii	konqueror	3.3.2-1	KDE's advanced File Manager, Web Browser and	4984
rc	mc	4.6.0-4.6.1-pr	Midnight Commander - a powerful file manager	4959
ii	xfonts-75dpi	4.3.0.dfsg.1-1	75 dpi fonts for X	4956
rc	korganizer	3.3.1-3	KDE personal organizer	4900
ii	libssl0.9.7	0.9.7e-2	SSL shared libraries	4880
rc	k3b	0.11.20-1	A sophisticated KDE cd burning application	4740
ii	gettext	0.14.1-10	GNU Internationalization utilities	4712
ii	samba-common	3.0.10-1	Samba common files used by both the server and	4520
ii	libgtk2.0-0	2.6.2-3	The GTK+ graphical user interface library	4496
ii	libarts1	1.3.2-2	aRts Sound system	4476
ii	python2.3-dev	2.3.5-3	Header files and a static library for Python	4472
ii	libx11-dev	4.3.0.dfsg.1-1	X Window System protocol client library development	4376
ii	gconf2	2.8.1-4	GNOME configuration database system. (daemon)	4360
ii	gcc-3.3	3.3.5-8	The GNU C compiler	4136
ii	qt3-dev-tools	3.3.3-8	Qt3 development tools	4044
ii	netpbm	10.0-8	Graphics conversion tools	3916
ii	manpages-fr	1.58.1-1	French version of the manual pages	3904
rc	kdevelop3	3.1.1-2	An IDE for Unix/X11 - development version	3888
rc	kpilot	3.3.1-3	KDE Palm Pilot hot-sync tool	3876
ii	libmagick6	6.0.6.2-2.1	Image manipulation library	3812
rc	kaddressbook	3.3.1-3	KDE NG addressbook application	3800
ii	g++-3.3	3.3.5-8	The GNU C++ compiler	3792
rc	mutt	1.5.6-20040907	Text-based mailreader supporting MIME, GPG, and	3768
ii	modconf	0.2.47	Device Driver Configuration	3728
ii	apt	0.5.28.1	Advanced front-end for dpkg	3664
rc	a2ps	4.13b-4.3	GNU a2ps - 'Anything to PostScript' converter	3612
rc	kppp	3.3.2-1	KDE dialer and frontend to pppd	3604
ii	libglib2.0-dev	2.6.2-1	Development files for the GLib library	3504
rc	lynx	2.8.5-2	Text-mode WWW Browser	3500
ii	python2.3-xml	0.8.4-1	XML tools for Python (2.3.x)	3404
ii	libgtkmm-2.4-1	2.4.10-1	C++ wrappers for GTK+ 2.4 (shared libraries)	3304
ii	xserver-svga	3.3.6-44	X server for SVGA graphics cards	3212
ii	xpdf-utils	3.00-12	Portable Document Format (PDF) suite -- utilities	3205
ii	wv	1.0.2-0.1	Convert and preview Microsoft Word documents	3148
ii	cpp-3.3	3.3.5-8	The GNU C preprocessor	3132
ii	tcl8.4	8.4.9-1	Tcl (the Tool Command Language) v8.4 - runtime	3132
ii	xutils	4.3.0.dfsg.1-1	X Window System utility programs	3128
ii	console-data	2002.12.04dbs-	Keymaps, fonts, charset maps, fallback table	3100
ii	php4-cli	4.3.10-13	command-line interpreter for the php4 script	3052

rc	k3blibs	0.11.20-1	The KDE cd burning application library - run	3044
ii	cvs	1.12.9-10	Concurrent Versions System	3036
rc	libgphoto2-2	2.1.5-3	gphoto2 digital camera library	3008
ii	libaudio-dev	1.7-2	The Network Audio System (NAS). (development)	3004
rc	elinks	0.9.3-1	Character mode WWW/FTP browser	2952
rc	blt	2.4z-3	the BLT extension library for Tcl/Tk - run-t	2932
ii	apache-common	1.3.33-3	support files for all Apache web servers	2920
ii	kdebase-bin	3.3.2-1	KDE Base (binaries)	2880
rc	knode	3.3.1-3	KDE news reader	2872
rc	wine	0.0.20050310-1	Windows Emulator (Binary Emulator)	2872
rc	kontakt	3.3.1-3	KDE pim application	2840
rc	libruby1.8	1.8.2-2	Libraries necessary to run the Ruby 1.8	2816
ii	kwin	3.3.2-1	KDE Window Manager	2672
ii	xlibs	4.3.0.dfsg.1-1	X Keyboard Extension (XKB) configuration dat	2668
ii	manpages-dev	1.70-1	Manual pages about using GNU/Linux for devel	2660
rc	konq-plugins	3.3.1-1	plugins for Konqueror, the KDE file/web/doc	2644
ii	kdelibs-bin	3.3.2-4.0.2	KDE core binaries	2580
ii	tk8.4	8.4.9-1	Tk toolkit for Tcl and X11, v8.4 - run-time	2572
rc	kismet	2004.04.R1-5	Wireless 802.11b monitoring tool	2560
ii	groff-base	1.18.1.1-6	GNU troff text-formatting system (base syste	2500
ii	libaspell15	0.60.2+2005012	The GNU Aspell spell-checker runtime toolkit	2464
ii	libqt3-headers	3.3.3-8	Qt3 header files	2440
rc	ttf-freefont	20031008-1.1	Freefont Serif, Sans and Mono Truetype fonts	2424
rc	gpsdrive	2.09-2	Car navigation system	2408
ii	xserver-s3	3.3.6-44	X server for S3 chipset-based graphics cards	2404
rc	xine-ui	0.99.3-1	the xine video player, user interface	2364
rc	krfb	3.3.2-1	KDE Remote Screen Server	2344
rc	gdb	6.3-5	The GNU Debugger	2338
ii	libtool	1.5.6-4	Generic library support script	2324
rc	slrn	0.9.8.1-5	threaded news reader (fast for slow links)	2204
ii	kweather	3.3.2-2	weather display applet for KDE	2188
ii	xserver-3dlabs	3.3.6-44	X server for 3DLabs GLINT and Permedia-based	2188
ii	xserver-i128	3.3.6-44	X server for Number Nine Imagine 128 graphic	2160
ii	dietlibc-dev	0.28-1	diet libc - a libc optimized for small size	2152
rc	icewm-common	1.2.20-1	wonderful Win95-OS/2-Motif-like window manag	2152
rc	gaim	1.1.4-2	multi-protocol instant messaging client	2144
rc	libgimp2.0	2.2.3-2	Libraries necessary to run the GIMP	2144
ii	xserver-s3v	3.3.6-44	X server for S3 ViRGE and ViRGE/VX-based gra	2140
ii	xfspgrog	2.6.20-1	Utilities for managing the XFS filesystem	2136
ii	openssl	0.9.7e-3	Secure Socket Layer (SSL) binary and related	2132
rc	squid	2.5.8-3	Internet Object Cache (WWW proxy cache)	2120
ii	enscript	1.6.4-7	Converts ASCII text to Postscript, HTML, RTF	2108
rc	gftp-common	2.0.18-4	shared files for other gFTP packages	2096
ii	kdeprint	3.3.2-1	KDE Print	2032
ii	xserver-mach64	3.3.6-44	X server for ATI Mach64-based graphics cards	2012
ii	libxt-dev	4.3.0.dfsg.1-1	X Toolkit Intrinsics development files	2000
ii	xserver-vga16	3.3.6-44	X server for VGA graphics cards	1992
rc	amor	3.3.2-2	a KDE creature for your desktop	1988
ii	rpm	4.0.4-30	Red Hat package manager	1976

rc	efax-gtk	2.2.14-1	font end in Gtk+/Gtkmm for the efax program	1952
ii	libvorbis-dev	1.0.1-1	The Vorbis General Audio Compression Codec (	1952
ii	xserver-p9000	3.3.6-44	X server for Weitek P9000-based graphics car	1944
rc	gqview	1.4.5-1	A simple image viewer using GTK+	1932
ii	fileutils	5.2.1-2	The GNU file management utilities (transitio	1928
ii	xserver-agx	3.3.6-44	X server for IBM XGA and IIT AGX-based graph	1928
rc	apache2-common	2.0.54-2	next generation, scalable, extendable web se	1916
ii	perl-base	5.8.4-6	The Pathologically Eclectic Rubbish Lister	1908
ii	nmap	3.75-1	The Network Mapper	1888
ii	xserver-mach32	3.3.6-44	X server for ATI Mach32-based graphics cards	1888
rc	docbook-xml	4.3-1.1	standard XML documentation system, for softw	1880
ii	kernel-package	8.124	A utility for building Linux kernel related	1840
ii	shellutils	5.2.1-2	The GNU shell programming utilities (transit	1840
ii	nxagent	1.4.0-m2-1	NoMachine NX - nesting X server with roundtr	1820
ii	php4-dev	4.3.10-13	Files for PHP4 module development	1816
ii	xserver-w32	3.3.6-44	X server for Tseng ET4000/W32 and ET6000-bas	1816
ii	php4-pear	4.3.10-12	PEAR - PHP Extension and Application Reposit	1764
ii	xserver-mach8	3.3.6-44	X server for ATI Mach8-based graphics cards	1764
ii	xserver-8514	3.3.6-44	X server for ATI 8514/A-based graphics cards	1756
ii	khelpcenter	3.3.2-1	KDE Help Center	1728
rc	kate	3.3.2-1	KDE Advanced Text Editor	1680
ii	lesstif2	0.93.94-11	OSF/Motif 2.1 implementation released under	1672
ii	textutils	5.2.1-2	The GNU text file processing utilities (tran	1668
ii	login	4.0.3-30.9	system login tools	1667
ii	xpdf-reader	3.00-12	Portable Document Format (PDF) suite -- view	1664
ii	autoconf	2.59a-3	automatic configure script builder	1652
ii	smail	3.2.0.115-5.1	Electronic mail transport system	1648
ii	ssh	3.8.1p1-8.sarg	Secure rlogin/rsh/rcp replacement (OpenSSH)	1644
ii	libkcal2	3.3.1-3	KDE calendaring library	1636
rc	nedit	5.4-1	A powerful, customizable, Motif based text e	1624
ii	libgtk1.2	1.2.10-17	The GIMP Toolkit set of widgets for X	1616
ii	libasound2-dev	1.0.8-1	ALSA library development files	1608
ii	ksysguard	3.3.2-1	KDE System Guard	1520
ii	libtiff4	3.7.1-3	Tag Image File Format (TIFF) library	1520
ii	konsole	3.3.2-1	KDE X terminal emulator	1504
ii	menu	2.1.21	provides update-menus functions for some app	1492
rc	kalarm	3.3.1-3	KDE alarm message and command scheduler	1484
ii	vim-gtk	6.3-058+1	Vi IMproved - GTK2 Version	1480
rc	xboard	4.2.6-2.1	An X Window System Chess Board.	1467
rc	scrollkeeper	0.3.14-9.1	A free electronic cataloging system for docu	1460
ii	wget	1.9.1-8	retrieves files from the web	1456
rc	kview	3.3.2-1	KDE simple image viewer/converter	1444
ii	vim	6.3-058+1	Vi IMproved - enhanced vi editor	1432
ii	kdesktop	3.3.2-1	KDE Desktop	1420
ii	tar	1.14-2	GNU tar	1416
ii	libvte4	0.11.12-1	Terminal emulator widget for GTK+ 2.0 - runt	1412
ii	ksplash	3.3.2-1	KDE Splash Screen	1388
ii	libx11-6	4.3.0.dfsg.1-1	X Window System protocol client library	1388
rc	lftp	3.0.13-1	Sophisticated command-line FTP/HTTP client p	1384

ii	debconf	1.4.46	Debian configuration management system	1360
ii	libsmbclient	3.0.10-1	shared library that allows applications to t	1360
ii	sgml-data	2.0.2	common SGML and XML data	1353
ii	e2fsprogs	1.36release-1	ext2 file system utilities and libraries	1352
ii	libmagic1	4.12-1	File type determination library using "magic	1336
rc	icewm	1.2.20-1	wonderful Win95-OS/2-Motif-like window manag	1304
ii	mgp	1.11b-1	MagicPoint- an X11 based presentation tool	1304
ii	gawk	3.1.4-2	GNU awk, a pattern scanning and processing l	1300
ii	librecode0	3.6-10	Shared library on which recode is based	1276
ii	kdm	3.3.2-1	KDE Display Manager	1264
ii	xfree86-common	4.3.0.dfsg.1-1	X Window System (XFree86) infrastructure	1252
ii	libxml2	2.6.16-3	GNOME XML library	1244
ii	mkisofs	2.01+01a01-2	Creates ISO-9660 CD-ROM filesystem images	1244
rc	myspell-fr-gut	1.0-17	The French dictionary for myspell (GUTenberg	1236
ii	kappfinder	3.3.2-1	KDE Application Finder	1232
ii	ncpfs	2.2.6-1	utilities to use resources from NetWare serv	1232
ii	bash	3.0-14	The GNU Bourne Again SHell	1228
rc	libwxbase2.4	2.4.2.6	wxBase library (runtime) - non-GUI support c	1220
rc	enigma	0.81.1-2	A game where you control a marble with the m	1216
rc	ethereal	0.10.9-1	network traffic analyzer	1204
ii	tasksel	1.51	Tool for selecting tasks for installation on	1204
ii	passwd	4.0.3-30.9	change and administer password and group dat	1197
ii	man-db	2.4.2-21	The on-line manual pager	1192
ii	libxaw7-dev	4.3.0.dfsg.1-1	X Athena widget set library development file	1188
rc	audacity	1.2.3-1	A fast, cross-platform audio editor	1171
rc	kooka	3.3.2-1	Scanner program for KDE	1164
ii	kudzu-knoppix	1.1.3-3	The Red Hat Linux hardware probing tool.	1164
rc	kget	3.3.2-1	KDE Download Manager	1156
rc	kworldclock	3.3.2-2	earth watcher for KDE	1148
ii	libarts1-dev	1.3.2-2	aRts Sound system (development files)	1144
rc	kasteroids	3.3.2-1	Asteroids for KDE	1136
ii	libperl5.8	5.8.4-6	Shared Perl library	1136
rc	cdrecord	2.01+01a01-2	command line CD writing tool	1132
ii	libdns16	9.2.4-1	DNS Shared Library used by BIND	1128
ii	xterm	4.3.0.dfsg.1-1	X terminal emulator	1124
ii	pcmcia-cs	3.2.5-10	PCMCIA Card Services for Linux	1096
rc	brltty	3.4.1-4	Access software for a blind person using a s	1084
ii	kphone	4.0.5-2	Voice over IP (VoIP) phone application	1080
ii	iptables	1.2.11-10	Linux kernel 2.4+ iptables administration to	1068
rc	toppler	1.1.1-1	clone of the "Nebulus" game on old 8 and 16	1068
rc	dhcp3-server	3.0.1-1	DHCP server for automatic IP address assignm	1064
ii	libssl0.9.6	0.9.6m-1	SSL shared libraries (old version)	1052
ii	dialog	1.0-20050206-1	Displays user-friendly dialog boxes from she	1048
rc	kompare	3.3.1-2	a KDE GUI for viewing differences between fi	1044
rc	kmix	3.3.1-2	KDE based mixer app	1028
ii	libasound2	1.0.8-1	ALSA library	1028
rc	libkleopatra0a	3.3.1-3	KDE GnuPG interface libraries	1028
rc	ark	3.3.2-1	KDE archiving tool	1008
rc	knotes	3.3.1-3	KDE sticky notes	1008
ii	libopenexr2	1.2.2-1	runtime files for the OpenEXR image library	1008
ii	debhelper	4.2.31	helper programs for debian/rules	1004
ii	gnome-keyring	0.4.1-1	GNOME keyring services (daemon and tools)	1000



ii	file	4.12-1	Determines file type using "magic" numbers	992
ii	libnxcmp0	1.4.0-m2-1	NoMachine NX - NX compression library	992
ii	lilo	22.6.1-4	Linux LOader - The Classic OS loader can loa	985
ii	xserver-common	4.3.0.dfsg.1-1	files and utilities common to all X servers	984
ii	xserver-common	3.3.6-44	files and utilities common to XFree86 3.x X	984
ii	util-linux	2.12-10	Miscellaneous system utilities	976
ii	automake1.4	1.4-p6-9	A tool for generating GNU Standards-complian	972
rc	libkdegames1	3.3.2-1	KDE games library and common files	972
ii	libglib2.0-0	2.6.2-1	The GLib library of C routines	968
rc	kmahjongg	3.3.2-1	the classic mahjongg game for KDE project	964
ii	hwdata-knoppix	0.107-10	hardware identification / configuration data	960
ii	jfsutils	1.1.7-1	utilities for managing the JFS filesystem	956
ii	libyaz	2.0.30-3	Z39.50 runtime libraries	956
ii	nxlibs	1.4.0-m2-1	NoMachine NX - common agent libraries	948
rc	kreversi	3.3.2-1	Reversi for KDE	940
ii	libidn11-dev	0.5.13-1.0	Development files GNU libidn, implementation	936
ii	libvorbisenc2	1.0.1-1	The Vorbis General Audio Compression Codec	936
ii	fdutils	5.4-20040228-1	Linux floppy utilities	924
rc	gcompris	6.4-1	Educational games for small children	924
ii	libvte-common	0.11.12-1	Terminal emulator widget for GTK+ 2.0 - comm	924
ii	xdm	4.3.0.dfsg.1-1	X display manager	924
rc	imaze	1.4-4	Popular multiplayer labyrinth run & shoot ga	920
ii	reiserfsprogs	3.6.19-1	User-level tools for ReiserFS filesystems	920
rc	libquicktime1	0.9.3-2	A library for reading and writing Quicktime	912
rc	krdc	3.3.2-1	KDE Remote Desktop Client	908
ii	libkdepim1	3.3.1-3	KDE PIM library	908
rc	minicom	2.1-8	friendly menu driven serial communication pr	900
ii	ppp	2.4.2+20040428	Point-to-Point Protocol (PPP) daemon	896
ii	libdbi-perl	1.46-6	Perl5 database interface by Tim Bunce	884
ii	libwww-perl	5.803-4	WWW client/server library for Perl (aka LWP)	884
ii	libkdenetwork2	3.3.1-3	KDE Network library	880
ii	pilot-link	0.11.8-10	Tools to communicate with a PalmOS PDA	880
ii	libdb4.2	4.2.52-18	Berkeley v4.2 Database Libraries [runtime]	876
ii	iproute	20041019-3	Professional tools to control the networking	864
ii	atmel-firmware	1.2-2	Firmware for Atmel at76c50x wireless network	860
rc	ktuberling	3.3.2-1	Potato Guy for KDE	860
rc	kuickshow	3.3.2-1	KDE image/slideshow viewer	856
ii	mobilemesh	1.0-5	Mobile adhoc networking	856
ii	fetchmail	6.2.5-12	SSL enabled POP3, APOP, IMAP mail gatherer/f	852
ii	xdialog	2.0.6-3	X11 replacement for the text util dialog	848
rc	libgimpprint1	4.2.7-5	The Gimp-Print printer driver library	840
rc	libstlport4.6	4.6.2-2	STLport C++ class library	840
ii	sed	4.1.2-8	The GNU sed stream editor	836
ii	khxedit	3.3.2-1	KDE hex editor	828
ii	nis	3.13-1	Clients and daemons for the Network Informat	828
ii	screen	4.0.2-4.1	a terminal multiplexor with VT100/ANSI termi	828
rc	xgalaga	2.0.34-29	X11 version of the famous Galaga game	828
ii	unifont	1.0-1	X11 dual-width GNU unicode font	826
rc	kbattleship	3.3.2-1	Battleship game for KDE	824
ii	isdn-config	0.21-1	ISDN Configuration tool for QT	816
ii	libpango1.0-0	1.8.1-1	Layout and rendering of internationalized te	816
ii	libstdc++5	3.3.5-8	The GNU Standard C++ Library v3	812
ii	smbfs	3.0.10-1	mount and umount commands for the smbfs	812

			(for	
ii	console-tools	0.2.3dbs-56	Linux console and font utilities	808
rc	libgnomeui-0	2.8.1-3	The GNOME 2 libraries (User Interface) - run	808
ii	xlibmesa-glu	4.3.0.dfsg.1-1	Mesa OpenGL utility library [XFree86]	808
ii	libkrb53	1.3.6-1	MIT Kerberos runtime libraries	796
ii	gettext-base	0.14.1-10	GNU Internationalization utilities for the b	788
ii	kxconfig	3.1.5-1	KDE display configuration tool	780
ii	make	3.80-9	The GNU version of the "make" utility.	780
ii	kmenuedit	3.3.2-1	KDE Menu Editor	768
ii	librpm4	4.0.4-30	RPM shared library	768
ii	libxext-dev	4.3.0.dfsg.1-1	X Window System miscellaneous extension libr	756
rc	pnm2ppa	1.12-13	PPM to PPA converter	747
ii	diff	2.8.1-9	File comparison utilities	744
ii	xlibmesa-gl	4.3.0.dfsg.1-1	Mesa 3D graphics library [XFree86]	744
ii	kdat	3.3.2-1	KDE tape backup tool	740
ii	klipper	3.3.2-1	KDE Clipboard	740
ii	kpersonalizer	3.3.2-1	KDE Personalizer	740
ii	libkonq4	3.3.2-1	Core libraries for KDE's file manager	740
rc	gftp-gtk	2.0.18-4	X/GTK+ FTP client	736
ii	qtparted	0.4.4-4	A parted frontend using QT	736
rc	iptraf	2.7.0-6	Interactive Colorful IP LAN Monitor	728
ii	karm	3.3.1-3	KDE time tracker tool	728
ii	kpackage	3.3.2-1	KDE Software package tool	728
ii	libdb3	3.2.9-22	Berkeley v3 Database Libraries [runtime]	728
ii	scli	0.2.12-2	a collection of SNMP command line management	724
rc	gtans	1.2-3	Tangram (puzzle) game using GTK+	720
ii	lde	2.6.0-6	Linux Disk Editor	720
ii	partimage	0.6.4-10.1	Linux/UNIX utility to save partitions in a c	720
ii	libxt6	4.3.0.dfsg.1-1	X Toolkit Intrinsics	716
rc	bind9	9.2.4-1	Internet Domain Name Server	712
ii	php-fpdf	1.53.dfsg-1	PHP class to generate PDF files	712
ii	vim-scripts	05-janv	plugins for vim, adding bells and whistles	710
ii	apache	1.3.33-3	versatile, high-performance HTTP server	696
ii	manpages	1.70-1	Manual pages about using a GNU/Linux system	696
ii	dbus-1	0.23-1	simple interprocess messaging system	692
ii	libfreetype6	2.1.7-2.3	FreeType 2 font engine, shared library files	692
ii	libldap2	2.1.30-3	OpenLDAP libraries	692
ii	debconf-i18n	1.4.46	full internationalization support for debcon	688
rc	xchat	2.4.1-0.1	IRC client for X similar to AmIRC	688
ii	console-common	0.7.49	Basic infrastructure for text console config	680
ii	devscripts	2.8.10	Scripts to make the life of a Debian Package	676
ii	libgnutls11	1.0.16-9	GNU TLS library - runtime library	676
rc	libsvga1	1.4.3-21	console SVGA display libraries	676
ii	libxaw7	4.3.0.dfsg.1-1	X Athena widget set library	672
ii	grub	0.95+cv5200406	GRand Unified Bootloader	668
ii	libmng-dev	1.0.8-1	M-N-G library (Development headers)	668
ii	modutils	2.4.26-1.2	Linux module utilities	668
rc	nessusd	2.2.3-1	Remote network security auditor, the server	668
rc	nessus	2.2.3-1	Remote network security auditor, the client	664
ii	kcron	3.3.2-1	KDE Crontab editor	656
rc	xawtv	3.94-1	X11 TV application	656
ii	xfsdump	2.2.23-1	Administrative utilities for the XFS filesystem	656

ii	rxvt-beta	2.7.10-0.1	VT102 terminal emulator for the X Window Sys	655
rc	chkrootkit	0.44-2	Checks for signs of rootkits on the local sy	652
ii	libgnomevfs2-0	2.8.4-2	The GNOME virtual file-system library (runti	652
ii	zlib1g-dev	1.2.2-3	compression library - development	648
ii	libnewt0.51	0.51.6-20	Not Erik's Windowing Toolkit - text mode win	644
ii	libdps1	4.3.0.dfsg.1-1	Display PostScript (DPS) client library	636
ii	tct	1.11-6.1	Forensics related utilities.	636
ii	usbview	1.0-6	USB device viewer	632
rc	gtkam	0.1.12-2.1	GTK+ application for digital still cameras	628
ii	ksysv	3.3.2-1	KDE SysV-style init configuration editor	624
ii	gocr	0.39-4	A command line OCR	620
ii	sox	12.17.5-4	A universal sound sample translator	620
ii	bsdmainutils	6.0.17	collection of more utilities from FreeBSD	612
ii	libgd2-xpm	2.0.33-1.1	GD Graphics Library version 2	608
ii	net-tools	1.60-10	The NET-3 networking toolkit	608
ii	twm	4.3.0.dfsg.1-1	Tab window manager	608
ii	rcs	5.7-14	The GNU Revision Control System	604
ii	findutils	4.1.20-5	utilities for finding files--find, xargs, an	600
ii	sash	3.7-5	Stand-alone shell	596
ii	sendfile	2.1-26	Simple Asynchronous File Transfer	596
ii	adduser	3.59	Add and remove users and groups	588
ii	libgsmme1c102	1.10-5	GSM mobile phone access library	588
ii	kpf	3.3.2-1	KDE public fileserver	584
ii	libsdl-perl	1.20.3-1	SDL bindings for the Perl language	584
rc	katonic	3.3.2-1	Atomic Entertainment game for KDE	576
ii	vorbis-tools	1.0.1-1.2	Several Ogg Vorbis Tools	574
ii	libxi-dev	4.3.0.dfsg.1-1	X Window System Input extension library deve	564
ii	x-dev	4.3.0.dfsg.1-1	X protocol development files	564
rc	kiconedit	3.3.2-1	An icon editor for creating KDE icons	556
ii	dpkg-dev	1.10.27	Package building tools for Debian	552
rc	gv	3.6.1-7	PostScript and PDF viewer for X	552
ii	libcurl3	7.13.1-2	Multi-protocol file transfer library, now wi	552
ii	liborbit2	2.12.1-1	libraries for ORBit2 - a CORBA ORB	548
ii	lisa	3.3.2-1	LAN Information Server	544
ii	pppdcapplugin	3.3.0.20041110	plugin for pppd to communicate with CAPI-cap	544
ii	procps	3.2.5-1	/proc file system utilities	540
ii	kviewshell	3.3.2-1	KDE generic framework for viewer application	528
rc	bittorrent	3.4.2-3	Scatter-gather network file transfer	524
ii	kuser	3.3.2-1	KDE user/group administration tool	524
ii	libsasl2	2.1.19-1.5	Authentication abstraction library	524
rc	libzvb0	0.2.13-1	video Blank Interval decoder (VBI) - runtime	524
rc	bluez-utils	2.10-5	Bluetooth tools and daemons	516
ii	libpng12-dev	1.2.8rel-1	PNG library - development	516
ii	nvtv	0.4.7-2	tool to control TV chips on NVidia cards und	516
rc	libgmp3	4.1.4-5	Multiprecision arithmetic library	508
ii	bzip2	1.0.2-5	high-quality block-sorting file compressor -	504
ii	libwmf0.2-7	0.2.8-1.1	Windows metafile conversion library	504
ii	libxmu-dev	4.3.0.dfsg.1-1	X Window System miscellaneous utility librar	504
ii	flex	2.5.31-31	A fast lexical analyzer generator.	500
ii	libtiff-tools	3.7.1-3	TIFF manipulation and conversion tools	497
ii	smartmontools	5.32-3	control and monitor storage systems using S.	496
rc	knx-installer	0.3-16	installs knoppix to hd	492
ii	apt-utils	0.5.28.1	APT utility programs	488

ii	lsuf	4.74-1	List open files.	484
ii	defoma	0.11.8-0.1	Debian Font Manager -- automatic font config	480
rc	kwin4	3.3.2-1	Connect Four clone for KDE	480
ii	tcpdump	3.8.3-3	A powerful tool for network monitoring and d	480
rc	xskat	4.0-1	3-player card game "Skat"	480
ii	arj	3.10.21-2	archiver for .arj files	476
rc	aumix-gtk	2.8-13	Simple mixer control program with GUI and te	476
ii	ktux	3.3.2-2	Tux screensaver for KDE	476
ii	dump	0.4b37-1	4.4bsd dump and restore for ext2 filesystems	472
ii	ktnef	3.3.1-3	KDE TNEF viewer	472
ii	wordtrans-data	1.1pre13-4	Multi Language Word Translator for Linux	472
rc	ettercap-gtk	0.7.1-1	Multipurpose sniffer/interceptor/logger for	468
ii	libbonoboui2-0	2.8.1-2	The Bonobo UI library	468
ii	libglib1.2-dev	1.2.10-9	Development files for GLib library	468
ii	ntfsprogs	1.9.4-2	tools for doing neat things in NTFS partiti	464
ii	raidtools2	1.00.3-17	Utilities to support 'new-style' RAID disks	464
ii	dselect	1.10.27	a user tool to manage Debian packages	460
ii	autofs	4.1.3+4.1.4bet	A kernel-based automounter for Linux	456
ii	expect	5.42.1-1.2	A program that "talks" to other programs	456
ii	libncursesw5	5.4-4	Shared libraries for terminal handling (wide	456
ii	gpm	1.19.6-19	General Purpose Mouse Interface	452
ii	libconsole	0.2.3dbs-56	Shared libraries for Linux console and font	452
ii	python	2.3.4-5	An interactive high-level object-oriented la	452
ii	gscanbus	0.7.1-5	scan IEEE1394 (firewire/i.link) bus	450
ii	libparted1.6-0	1.6.11-8	The GNU Parted disk partitioning shared libr	448
ii	php4-imagick	0.9.11-0.2	ImageMagick module for php4	448
ii	tsocks	1.8beta5-2	transparent network access through a SOCKS 4	446
ii	gsm-utils	1.10-5	GSM mobile phone access applications	444
rc	ksokoban	3.3.2-1	Sokoban game for KDE	444
ii	libncurses5	5.4-4	Shared libraries for terminal handling	444
rc	kfax	3.3.2-1	KDE G3/G4 Fax Viewer	432
ii	liblcms1-dev	1.13-1	Color management library (Development header	432
ii	imlib-progs	1.9.14-16.2	Configuration program for Imlib and GDK-Imlib	428
ii	libexpat1-dev	1.95.8-1	XML parsing C library - development kit	428
ii	slang1a-utf8	1.4.9dbs-8	The S-Lang programming library with utf8 sup	428
rc	kpaint	3.2.3-1.1	A Simple Paint Program for KDE	424
ii	slang1	1.4.9dbs-8	The S-Lang programming library - runtime ver	424
ii	grep	2.5.1.ds1-4	GNU grep, egrep and fgrep	421
ii	x11vnc	0.7-1	VNC server which uses your current X11 sessi	421
ii	libice-dev	4.3.0.dfsg.1-1	Inter-Client Exchange library development fi	420
ii	libxslt1.1	1.1.12-5	XSLT processing library - runtime library	420
ii	klaptopdaemon	3.3.2-1	KDE battery monitoring and management for la	412
ii	libjpeg62-dev	6b-9	Development files for the IJG JPEG library	412
rc	libkscan1	3.3.2-1	Scanner library for KDE	412
ii	mttools	3.9.9-2.1	Tools for manipulating MSDOS files	412
ii	kcalc	3.3.2-1	KDE calculator	408
ii	libgd1	1.8.4-17.woody	GD Graphics Library	408
ii	libsndfile1	1.0.10-2	Library for reading/writing audio files	408
ii	libtiff2	1.4pre.2003040	FreeType 1, The FREE TrueType Font Engine, s	408
ii	vimpart	3.3.1-1	embedded Vim text editor component for KDE	404
ii	ncurses-bin	5.4-4	Terminal-related programs and man pages	401

ii	info	4.7-2.2	Standalone GNU Info documentation browser	400
ii	libxmu6	4.3.0.dfsg.1-1	X Window System miscellaneous utility librar	400
ii	libgcrypt11	1.2.0-11	LGPL Crypto library - runtime library	396
ii	libice6	4.3.0.dfsg.1-1	Inter-Client Exchange library	396
ii	libxv-dev	4.3.0.dfsg.1-1	X Window System video extension library deve	396
rc	arpwatch	2.1a13-2	Ethernet/FDDI station activity monitor	392
ii	libpam0g-dev	0.76-22	Development files for PAM	385
rc	chromium	0.9.12-5	Fast paced, arcade-style, scrolling space sh	384
ii	hotplug	0.0.20040329-1	Linux Hotplug Scripts	384
ii	liburi-perl	1.30-1	Manipulates and accesses URI strings	384
ii	sharutils	4.2.1-11	shar, unshar, uuencode, uudecode	384
ii	isdnutils-base	3.3.0.20041110	ISDN utilities, the basic (minimal) set	380
ii	kcmlinux	3.3.2-1	KDE Frontend for the Linux kernel configurat	380
ii	libogg-dev	1.1.0-1	Ogg Bitstream Library Development	380
ii	sudo	1.6.8p5-1	Provide limited super user privileges to spe	380
ii	libxpm4	4.3.0.dfsg.1-1	X pixmap library	372
ii	cupsys-client	1.1.23-4	Common UNIX Printing System(tm) - client pro	368
ii	ding	1.3-5	Dictionary lookup program for Unix	368
ii	libxext6	4.3.0.dfsg.1-1	X Window System miscellaneous extension libr	368
ii	libxtrap-dev	4.3.0.dfsg.1-1	X Window System protocol-trapping extension	368
ii	playmidi	2.4debian-3	MIDI player	368
rc	bacula-fd	1.36.1-1	Network backup, recovery and verification (F	364
ii	dh-make	0.37	Debianizing Tool for debhelper	364
ii	libxft1	4.3.0.dfsg.1-1	FreeType-based font drawing library for X (v	364
ii	libxpm-dev	4.3.0.dfsg.1-1	X pixmap library development files	364
ii	rsync	2.6.3-2	fast remote file copy program (like rcp)	364
ii	kmoon	3.3.2-2	moon phase indicator for KDE	360
ii	distcc	2.18.1-5	Simple distributed compiler client and serve	356
rc	libkdeedu1	3.3.1-3	library for use with KDE educational apps	356
ii	libpam-modules	0.76-22	Pluggable Authentication Modules for PAM	354
ii	kandy	3.3.1-3	KDE mobile phone utility	352
rc	libpgme11	1.0.2-1	GPGME - GnuPG Made Easy	352
ii	libjpeg-progs	6b-9	Programs for manipulating JPEG files	352
ii	libt1-5	5.0.2-3	Type 1 font rasterizer library - runtime	352
ii	reportbug	3.8	reports bugs in the Debian distribution	352
rc	ksame	3.3.2-1	SameGame for KDE	348
ii	libbonobo2-0	2.8.1-2	Bonobo CORBA interfaces library	348
ii	libmng1	1.0.8-1	Multiple-image Network Graphics library	344
ii	xaw3dg	1.5+E-8	Xaw3d widget set	344
ii	kdoc	2.0a54-2	C++ and IDL Source Documentation System	340
ii	libncp	2.2.6-1	shared library used by programs that use Net	340
ii	libsm6	4.3.0.dfsg.1-1	X Window System Session Management library	340
ii	libxp-dev	4.3.0.dfsg.1-1	X Window System printing extension library d	340
ii	libxtrap6	4.3.0.dfsg.1-1	X Window System protocol-trapping extension	340
ii	libxi6	4.3.0.dfsg.1-1	X Window System Input extension library	336
ii	libxp6	4.3.0.dfsg.1-1	X Window System printing extension library	336
ii	psutils	1.17-17	A collection of PostScript document handling	335
ii	ash-knoppix	0.2-4	A smaller version of the Bourne shell enhanc	332
ii	kfind	3.3.2-1	KDE File Find Utility	332
ii	libisc7	9.2.4-1	ISC Shared Library used by BIND	332
ii	speedtouch	1.3.1-1	userspace driver for the Alcatel Speedtouch	332
ii	ippdp	3.3.0.20041110	PPP daemon for syncPPP over ISDN	328
ii	libnet-perl	1.19-1	Implementation of Internet protocols for Per	328

ii	libsm-dev	4.3.0.dfsg.1-1	X Window System Session Management library d	328
ii	libxtst6	4.3.0.dfsg.1-1	X Window System event recording and testing	328
ii	m4	1.4.2-1	a macro processing language	328
ii	procmail	3.22-10	Versatile e-mail processor	328
ii	recode	3.6-10	Character set conversion utility	326
rc	dante-client	1.1.14-2	SOCKS wrapper for users behind a firewall	324
rc	kteatime	3.3.2-2	KDE utility for making a fine cup of tea	324
ii	libxv1	4.3.0.dfsg.1-1	X Window System video extension library	324
ii	fontconfig	2.2.3-4	generic font configuration library	320
ii	libxmu1	4.3.0.dfsg.1-1	lightweight X Window System miscellaneous ut	320
ii	libxrandr2	4.3.0.dfsg.1-1	X Window System Resize, Rotate and Reflectio	320
ii	pciutils	2.1.11-15	Linux PCI Utilities	320
ii	rdesktop	1.3.1-1.1	RDP client for Windows NT/2000 Terminal Serv	320
ii	sysvinit	2.84-190	System-V like init with KNOPPIX scripts.	320
ii	ucf	1.14	Update Configuration File: preserves user ch	320
ii	unzip	5.51-2	De-archiver for .zip files	320
ii	joe	3.1-0.2	user friendly full screen text editor	317
ii	kpager	3.3.2-1	KDE Desktop Pager	316
ii	macutils	2.0b3-13	Set of tools to deal with specially encoded	316
ii	mount-aes	2.11x-1	Tools for mounting and manipulating filesyst	316
ii	euro-support	1.31	Help setting up euro character support in yo	312
ii	ksmserver	3.3.2-1	KDE Session Manager	312
ii	libcdk4	4.9.9-4	C-based curses widget library	312
ii	libcupsys2-dev	1.1.23-4	Common UNIX Printing System(tm) - developmen	312
ii	libtag1	1.3.1-1	TagLib Audio Meta-Data Library	312
ii	libxtst-dev	4.3.0.dfsg.1-1	X Window System event recording and testing	312
rc	ttf-opensymbol	1.1.3-7	The OpenSymbol TrueType font	312
rc	libopenal0	0.2004090900-1	OpenAL is a portable library for 3D spatiali	308
ii	php4-common	4.3.10-13	Common files for packages built from the php	308
ii	jackd	0.99.0-6	JACK Audio Connection Kit (server and exampl	304
ii	libtidy0	20040811-2	HTML syntax checker and reformatter - librar	304
ii	libxrandr-dev	4.3.0.dfsg.1-1	X Window System Resize, Rotate and Reflectio	304
rc	chktex	1.6.3-1	Finds typographic errors in LaTeX	300
rc	efax	0.9a-15	Programs to send and receive fax messages	300
ii	gksu	1.2.3-2	graphical frontend to su	300
ii	libexif10	0.6.9-4	The EXIF library allows you to parse an EXIF	300
ii	libidn11	0.5.13-1.0	GNU libidn library, implementation of IETF I	300
ii	libreadline5	5.0-10	GNU readline and history libraries, run-time	300
ii	libsmpeg0	0.4.5+cvs20030	SDL MPEG Player Library - shared libraries	300
ii	uudeview	0.5.20-2	Smart multi-file multi-part decoder (command	300
rc	gq	1.0beta1-2	GTK-based LDAP client	298
ii	dpatch	2.0.10	patch maintenance system for Debian source p	296
rc	libcvsservice0	3.3.1-2	DCOP service for accessing CVS repositories	296
rc	tuxpaint	0.9.14-1	A paint program for young children	296
hi	cloop-utils	2.02-1	Tools for handling with cloop compressed vol	292
ii	imlib-base	1.9.14-16.2	Common files needed by the Imlib/Gdk-Imlib p	292
ii	libpcre3-dev	4.5-1.1	Perl 5 Compatible Regular Expression Library	292
ii	libpopt0	1.7-5	lib for parsing cmdline parameters	292
ii	libtasn1-2-dev	0.2.10-4	Manage ASN.1 structures (development)	292

rc	ksnapshot	3.3.2-1	Screenshot application for KDE	288
ii	xloadimage	4.1-14	Graphics file viewer under X11	288
rc	gnuchess	5.07-2	Plays a game of chess, either against the us	284
rc	xbattle	5.4.1-12	A concurrent multi-player battle strategy ga	281
ii	esound-common	0.2.35-2	Enlightened Sound Daemon - Common files	280
rc	libkgantt0	3.3.1-3	KDE gantt charting library	280
ii	liblcms1	1.13-1	Color management library	280
ii	libreadline4	4.3-15	GNU readline and history libraries, run-time	280
ii	wvdial	1.54.0-1.1	PPP dialer with built-in intelligence	280
ii	libpng2	1.0.12-3.woody	PNG library - runtime	276
ii	libapr0	2.0.54-2	the Apache Portable Runtime	275
ii	apmd	3.2.2-2	Utilities for Advanced Power Management (APM)	272
ii	cron	3.0pl1-86	management of regular background processing	272
ii	html2text	1.3.2a-1	An advanced HTML to text converter	272
ii	isapnptools	1.26-5	ISA Plug-And-Play configuration utilities.	272
rc	kmailcv	3.3.1-3	KDE KMail addressbook converter	272
ii	libusb-dev	0.1.10a-7	userspace USB programming library developmen	272
hi	mknbi	1.4.0-1	Create tagged images for Etherboot or Netboo	272
ii	libvcdinfo0	0.7.21-1	library to extract information from VideoCD	268
ii	libmikmod2	3.1.11-a-6	A portable sound library	265
ii	apache-utils	1.3.33-3	utility programs for web servers	264
ii	hostapd	0.2.6-1	IEEE 802.11 AP and IEEE 802.1X Authenticator	264
ii	libflac6	1.1.1-5	Free Lossless Audio Codec - runtime C librar	264
ii	libfontconfig1	2.2.3-4	generic font configuration library (shared I	264
ii	libfontconfig1	2.2.3-4	generic font configuration library (developm	264
rc	libmimelib1a	3.3.1-3	KDE mime library	264
ii	pm-dev	4.3.0.dfsg.1-1	proxy management protocol development files	264
rc	bacula-console	1.36.1-1	Network backup, recovery and verification (M	260
ii	libxmu-dev	4.3.0.dfsg.1-1	lightweight X Window System miscellaneous ut	260
rc	sane-utils	1.0.15-6	API library for scanners -- utilities	260
rc	alevt	1.6.1-6	X11 Teletext/Videotext browser	256
ii	ktp	3.3.2-1	Kandalf's Useful Tips	256
ii	less	382-1	Pager program similar to more	256
ii	libglib1.2	1.2.10-9	The GLib library of C routines	256
ii	libgnome2-0	2.8.1-2	The GNOME 2 library - runtime files	256
ii	mailx	8.1.2-0.200405	A simple mail user agent	256
ii	psmisc	21.5-1	Utilities that use the proc filesystem	256
ii	stunnel	3.26-2	Universal SSL tunnel for network daemons	256
ii	tnef	1.2.3-0.1	Tool to unpack MIME application/ms-tnef atta	256
ii	nxssh	1.4.0-m2-1	NoMachine NX - custom and modified OpenSSH	252
rc	kodo	3.3.2-2	mouse odometer for KDE	248
ii	orinoco	0.15-1	Orinoco and Prism 2 wireless card driver wit	248
ii	usbutils	0.70-1	USB console utilities	248
ii	comerr-dev	2.1-1.36releas	common error description library - headers a	244
rc	gs-common	0.3.7	Common files for different Ghostscript relea	244
ii	ifupdown	0.6.4-4.10	High level tools to configure network interf	244
ii	kfloppy	3.3.2-1	KDE floppy formatter	244
ii	mdadm	1.9.0-1	Manage MD devices aka Linux Software Raid	244
ii	sitar	0.8.4-1	SITAR - System InformaTion At Runtime	244
ii	zip	2.30-8	Archiver for .zip files	244

ii	imlib1	1.9.14-16.2	imaging library for X and X11 (using libpng2	240
ii	ipsec-tools	0.3.3-7	IPsec tools for Linux	240
ii	libmodplug0	0.7-4	shared libraries for mod music based on ModP	240
ii	libpcre3	4.5-1.1	Perl 5 Compatible Regular Expression Library	240
ii	xlibs-dev	4.3.0.dfsg.1-1	X Window System client library development f	240
ii	xviddetect	0.3-4	XFree86 installation helper	240
rc	freeglut3	2.2.0-8	OpenGL Utility Toolkit	236
ii	gdk-implib1	1.9.14-16.2	imaging library for use with gtk (using libp	232
rc	libgtkspell0	2.0.8-1	a spell-checking addon for GTK's TextView wi	232
rc	telnet-ssl	0.17.24+0.1-6	The telnet client with SSL encryption suppor	232
ii	hping2	2.rc3-3	Active Network Smashing Tool	228
ii	kcharselect	3.3.2-1	KDE character selector	228
ii	libaudiofile0	0.2.6-5	Open-source version of SGI's audiofile libra	228
ii	libsensors3	2.9.0-14	library to read temperature/voltage/fan sens	228
ii	mawk	1.3.3-11	a pattern scanning and text processing langu	228
ii	cupsys-bsd	1.1.23-4	Common UNIX Printing System(tm) - BSD comman	224
ii	libopencdk8	0.5.5-10	Open Crypto Development Kit (OpenCDK) (runti	224
ii	libpcap0.8	0.8.3-5	System interface for user-level packet captu	224
ii	libpng12-0	1.2.8rel-1	PNG library - runtime	224
ii	xml-core	0.09	XML infrastructure and XML catalog file supp	224
ii	libart-2.0-dev	2.3.17-1	Library of functions for 2D graphics - devel	221
ii	libgconf2-4	2.8.1-4	GNOME configuration database system librarie	220
rc	libltdl3	1.5.6-4	A system independent dlopen wrapper for GNU	220
ii	libpng10-0	1.0.18-1	PNG library, older version - runtime	220
ii	libxft-dev	2.1.2-6	FreeType-based font drawing library for X (d	220
ii	po-debconf	0.8.20	manage translated Debconf templates files wi	220
rc	pppstatus	0.4.2-7	console-based PPP status monitor	220
ii	wireless-tools	27-févr	Tools for manipulating Linux Wireless Extens	220
ii	fbset	2.1-16	framebuffer device maintenance program	216
ii	ksync	3.3.1-3	KDE Sync	216
ii	libidl0	0.8.3-1	library for parsing CORBA IDL files	216
ii	shaper	2.2.12-0.7.3-1	Traffic shaper init script (cbq.init) for Li	216
ii	whois	4.7.0	the GNU whois client	216
ii	defrag	0.73pjm1-7	ext2, minix and xiafs filesystem defragmente	212
ii	grep-dctrl	2.1.8	Grep Debian package information	208
ii	imlib11	1.9.14-17.1	Imlib is an imaging library for X and X11	208
ii	ipchains	1.3.10-15	Network firewalling for Linux 2.2.x	208
ii	libatk1.0-0	1.8.0-4	The ATK accessibility toolkit	208
rc	libgc1	6.4-1	conservative garbage collector for C and C++	208
ii	nfs-common	1.0.6-3.1	NFS support files common to client and serve	208
ii	thttpd	2.23beta1-3	tiny/turbo/throttling HTTP server	208
ii	at	3.1.8-11	Delayed job execution and batch processing	204
ii	hunt	1.5-4	Advanced packet sniffer and connection intru	204
ii	libglade2-0	2.4.2-2	library to load .glade files at runtime	204
ii	libnetpbm9	10.0-8	Shared libraries for netpbm	204
rc	sane	1.0.13-2	scanner graphical frontends	204
ii	aspell-bin	0.50.5-5	GNU Aspell standalone spell-check utilities	200
ii	gzip	1.3.5-9	The GNU compression utility	200
rc	libdv4	0.103-2	software library for DV format digital video	200
ii	libmad0-dev	0.15.1b-1	MPEG audio decoder development library	200
ii	pppoe	3.5-4	PPP over Ethernet driver	200
ii	strace	4.5.8-1.2	A system call tracer	200



ii	dc	1.06-15	The GNU dc arbitrary precision reverse-polis	196
ii	fakeroot	1.2.2	Gives a fake root environment	196
ii	fdisk-udeb	2.11u-3	Partition a hard drive (manual, cfdisk)	196
ii	libpisock8	0.11.8-10	Library for communicating with a PalmOS PDA	196
ii	libsdl-console	1.3-3	console that can be added to any SDL applica	196
ii	pptp-linux	1.5.0-5	Point-to-Point Tunneling Protocol (PPTP) Cli	196
ii	sysklogd	1.4.1-16	System Logging Daemon	196
ii	tcpd	7.6.dbs-6	Wietse Venema's TCP wrapper utilities	196
ii	hostap-utils	0.2.6-1	Utility programs for Host AP driver for Inte	192
ii	libjpeg62	6b-9	The Independent JPEG Group's JPEG runtime li	192
ii	libpcap0.7	0.7.2-7	System interface for user-level packet captu	192
ii	debootstrap	0.2.45-0.1	Bootstrap a basic Debian system	188
ii	e2fslibs	1.36release-1	ext2 filesystem libraries	188
ii	libcdparanoia0	3a9.8-11	Shared libraries for cdparanoia (runtime lib	188
rc	libneon23	0.23.9.dfsg.3-	An HTTP and WebDAV client library [old versi	188
ii	libnetpbm10	10.0-8	Shared libraries for netpbm	188
ii	netcat	1.10-27	TCP/IP swiss army knife	186
ii	lrzsz	0.12.21-4	Tools for zmodem/xmodem/ymodem file transfer	185
ii	bc	1.06-15	The GNU bc arbitrary precision calculator la	184
ii	libcdio3	0.71-2	library to read and control CD-ROM	184
ii	libexpat1	1.95.8-1	XML parsing C library - runtime library	184
ii	libgksu1.2-0	1.2.5a-1	library providing su and sudo functionality	184
ii	libvorbis0a	1.0.1-1	The Vorbis General Audio Compression Codec	184
ii	psfontmgr	0.11.8-0.1	PostScript font manager -- part of Defoma, D	184
rc	anacron	2.3-11	a cron-like program that doesn't go by time	180
ii	knoppix-menu	0.5-2	Menu structure and icons for the KDE/GNOME K	180
ii	lzop	1.01-3	fast compression program	180
ii	netbase	4.20	Basic TCP/IP networking system	180
hi	pppconfig	2.1	A text menu based utility for configuring pp	180
ii	deborphan	1.7.14	Find orphaned libraries	176
ii	ftpd	0.17-19	FTP server	176
ii	hdparm	5.9-1	tune hard disk parameters for high performan	176
rc	initrd-tools	0.1.77	tools to create initrd image for prepackaged	176
ii	libgksuui1.0-0	1.0.3-2	a graphical fronted to su library	176
ii	liblwres1	9.2.4-1	Lightweight Resolver Library used by BIND	176
ii	libmal1	0.40-3	A library of the functions in malsync (devel	176
rc	mtr	0.67-1	Full screen ncurses and X11 traceroute tool	176
ii	nxdesktop	1.4.0-m2-1	NoMachine NX - nesting X server with roundtr	176
ii	patch	2.5.9-2	Apply a diff file to an original	176
ii	pppoeconf	1.1	configures PPPoE/ADSL connections	176
ii	scanmodem	20040730-1	Shell script from linmodems.org for identify	176
ii	gcc-3.3-base	3.3.5-8	The GNU Compiler Collection (base package)	172
ii	knoppix-splash	0.1-5	user mode bootsplash suite for knoppix	172
ii	knoppix-splash	0.1-5	user mode bootsplash tools for knoppix	172
ii	libft-perl	1.2-13.1	Perl module for the FreeType library	168
ii	liblzo1	1.08-1.2	A real-time data compression library	168
ii	mime-support	3.28-1	MIME files 'mime.types' & 'mailcap', and sup	168
ii	netpipes	4.2-3	a package to manipulate BSD TCP/IP stream so	168
rc	telnetd-ssl	0.17.24+0.1-6	The telnet server with SSL encryption suppor	168
rc	bacula-common	1.36.1-1	Network backup, recovery and verification (C	164

ii	dash	0.5.2-1	The Debian Almquist Shell	164
rc	libexif-gtk4	0.3.3-6	Library providing GTK+ widgets to display/ed	164
ii	mikmod	3.2.1-1	Portable tracked music player	164
ii	sslwrap	2.0.6-15	Simple TCP service encryption using TLS/SSL	164
rc	aalib1	1.4p5-22	ascii art library	160
ii	isdnvboxclient	3.3.0.20041110	ISDN answering machine, client	160
ii	libplrpc-perl	0.2017-1	Perl extensions for writing PIRPC servers an	160
ii	libqt3-mt-dev	3.3.3-8	Qt development files (Threaded)	160
ii	libtasn1-2	0.2.10-4	Manage ASN.1 structures (runtime)	160
ii	ntpdate	4.2.0a+stable-	The ntpdate client for setting system time f	160
rc	smpeg-xmms	0.3.5-5	SDL MPEG Player Library - XMMS plugin	160
ii	base-files	3.1.2	Debian base system miscellaneous files	158
ii	bsdutils	2.12-10	Basic utilities from 4.4BSD-Lite	156
ii	debianutils	2.13.0	Miscellaneous utilities specific to Debian	156
ii	fbi	2.01-1.2	Linux frame buffer image viewer	156
ii	ftp	0.17-12	The FTP client.	156
ii	makedev	2.3.1-75	Creates device files in /dev	156
ii	sysutils	1.3.8.5.1	Miscellaneous small system utilities.	156
rc	frozen-bubble	1.0.0-6	Pop out the bubbles !	154
ii	wprint	2.04-1	Print any charset from web browsers and Html	154
ii	sound-recorder	0.06-6.1	Direct-to-disk recording and play-back progr	153
ii	fifteenapplet	3.3.2-2	fifteen pieces puzzle for KDE	152
ii	libntfs5	1.9.4-2	library that provides common NTFS access fun	152
ii	zlib1g	1.2.2-3	compression library - runtime	152
ii	larswm	7.5.3-1	Lars Window Manager with tiled windows	149
rc	cddb	2.6-17	CD DataBase support tools	148
ii	ed	0.2-20	The classic unix line editor	148
rc	libadns1	1.0-8.2	Asynchronous-capable DNS client library and	148
ii	libaudio2	1.7-2	The Network Audio System (NAS). (shared libr	148
ii	libcupsimage2	1.1.23-4	Common UNIX Printing System(tm) - image	148
ii	libmad0	0.15.1b-1	MPEG audio decoder library	148
ii	urlview	0.9-11	Extracts URLs from text	148
ii	dosfstools	2.10-1	Utilities to create and check MS-DOS FAT fil	144
ii	hwsetup	1.0-14	Automatic hardware setup using the kudzu lib	144
ii	libxft2	2.1.2-6	FreeType-based font drawing library for X	144
rc	liblua50	5.0.2-5	Main interpreter library for the Lua 5.0 pro	140
ii	libxcursor-dev	1.1.3-1	X cursor management library (development fil	140
ii	logrotate	3.7-2	Log rotation utility	140
ii	nxviewer	1.4.0-m2-1	NoMachine NX - nesting X server with roundtr	140
ii	setserial	2.17-40	Controls configuration of serial ports	140
rc	wavemon	0.4.0b-7	Wireless Device Monitoring Application	140
rc	xvier	1.0-7.1	a "Four in a row" game	140
rc	airsnort	0.2.7e-1	WLAN sniffer	136
ii	irda-common	0.9.15-5	IrDA management utilities	136
ii	ksysguardd	3.3.2-1	KDE System Guard Daemon	136
ii	ktimer	3.3.2-1	KDE timer	136
ii	libisccc0	9.2.4-1	Command Channel Library used by BIND	136
ii	libslp1	1.0.11a-1	OpenSLP libraries	136
ii	netkit-inetd	0.10-10	The Internet Superserver	136
rc	netris	0.52-2	A free, networked version of T*tris	136
ii	ncurses-base	5.4-4	Descriptions of common terminal types	134
ii	autotools-dev	20041130.2	Update infrastructure for config.{guess,sub}	132
ii	ibod	1.5.0-4	ISDN MPPP bandwidth on demand daemon	132

ii	libatm1	2.4.1-16	shared library for ATM (Asynchronous Transfe	132
ii	libesd0-dev	0.2.35-2	Enlightened Sound Daemon - Development files	132
ii	libiso9660-3	0.71-2	library to work with ISO9660 filesystems	132
ii	libsdl-gfx1.2	2.0.9-4	drawing and graphical effects extension for	132
ii	netcat6	0.5-1	TCP/IP swiss army knife with IPv6 support	132
ii	xvncviewer	3.3.7-7	Virtual network computing client software fo	132
ii	cpio	2.5-1.2	GNU cpio -- a program to manage archives of	128
ii	klogd	1.4.1-16	Kernel Logging Daemon	128
ii	libpam-ncp	2.2.6-1	PAM module allowing authentication from a Ne	128
ii	libxrender-dev	0.8.3-7	X Rendering Extension client library (develo	128
ii	mpg321	0.2.10.3	A Free command-line mp3 player, compatible w	128
ii	parted-doc	1.6.21-1	The GNU Parted disk partition resizing progr	128
ii	portmap	05-juil	The RPC portmapper	128
ii	ttmkfdir	3.0.9-3	Utility used to create fonts.scale files for	128
ii	ipx	2.2.6-1	utilities to configure the kernel ipx interf	124
rc	libavc1394-0	0.4.1-2	control IEEE1394 audio/video devices	124
ii	libid3tag0	0.15.1b-3	ID3 tag reading library from the MAD project	124
rc	libmyspell3	3.1-11	MySpell spellchecking library	124
rc	libnet1	1.1.2.1-2	library for the construction and handling of	124
ii	loadlin	1.6c-1	a loader (running under DOS) for LINUX kerne	124
ii	pkg-config	0.15.0-4	Manage compile and link flags for libraries	124
ii	wipe	0.20-1	Secure file deletion	124
ii	dict	1.9.15-1	Dictionary Client	122
ii	debconf-utils	1.4.46	debconf utilities	120
ii	dupload	2.6.3	utility to upload Debian packages	120
ii	kdepasswd	3.3.2-1	KDE password changer	120
ii	libblkid1	1.36release-1	block device id library	120
rc	libbluetooth1	2.15-2	Library to use the BlueZ Linux Bluetooth sta	120
ii	libgpg-error0	1.0-1	library for common error values and messages	120
ii	liboggflac1	1.1.1-5	Free Lossless Audio Codec - runtime C librar	120
ii	libungif4g	4.1.3-2	shared library for GIF images (runtime lib)	120
ii	mpack	1.6-1	tools for encoding/decoding MIME messages	120
ii	vpnc	0.3.2+SVN20041	Cisco-compatible VPN client	120
ii	vnc-common	3.3.7-7	Virtual network computing server software	118
ii	libiscfg0	9.2.4-1	Config File Handling Library used by BIND	117
ii	libbz2-1.0	1.0.2-5	high-quality block-sorting file compressor I	116
ii	libgcc1	3.4.3-6	GCC support library	116
ii	libpopt-dev	1.7-5	lib for parsing cmdline parameters - develop	116
ii	libwrap0-dev	7.6.dbs-6	Wietse Venema's TCP wrappers library, develo	116
ii	powermgmt-base	1.21	Common utils and configs for power managemen	116
ii	vcdtools	0.4-2	Creates Video CD (VCD) filesystem images	116
ii	xkbset	0.5-2	Small utility to change the AccessX settings	116
ii	libxdelta2	1.1.3-6	Xdelta runtime library	114
ii	cloop-module	2.02-1	The compressed loopback block device kernel	112
rc	cpuburn	1.4-9	a collection of programs to put heavy load o	112
rc	gqcam	0.9+gg-1	GTK Webcam control	112
ii	irda-tools	0.9.15-5	IrDA handling tools	112
ii	kdssh	3.3.2-1	KDE ssh frontend	112
ii	libnewt-utf8-0	0.50.17-13	newt - text mode windowing with slang, with	112
ii	libspeex1	1.0.rel.4-1	The Speex Speech Codec	112
ii	php4-gd	4.3.10-13	GD module for php4	112

ii	pump	0.8.19-5	simple DHCP/BOOTP client	112
ii	render-dev	0.8-4	X Rendering Extension header files and docum	112
ii	txt2regex	0.8-2	A Regular Expression "wizard", all written w	111
ii	eject	2.0.13deb-8sar	ejects CDs and operates CD-Changers under Li	108
ii	gif2png	2.4.7-4	GIF -> PNG conversions	108
ii	libdb1-compat	2.1.3-7	The Berkeley database routines [glibc 2.0/2.	108
ii	httptunnel	3.3-2	Tunnels a data stream in HTTP requests.	105
ii	libpam0g	0.76-22	Pluggable Authentication Modules library	105
ii	xpdf-common	3.00-12	Portable Document Format (PDF) suite -- comm	105
ii	attr	2.4.21-1	Utilities for manipulating filesystem extend	104
ii	debfooster	2.5-4	Install only wanted Debian packages	104
ii	eyesapplet	3.3.2-2	eyes applet for KDE	104
ii	libbz2-dev	1.0.2-5	high-quality block-sorting file compressor l	104
ii	libgpmg1	1.19.6-19	General Purpose Mouse - shared library	104
rc	liblircclient0	0.6.6-12	LIRC client library	104
ii	nparted	0.1-8	Newt and GNU Parted based disk partition tab	104
ii	secpolicy	3.3.2-1	KDE PAM security policy configuration tool	104
ii	traceroute	1.4a12-18	traces the route taken by packets over a TCP	104
ii	libao2	0.8.5-1	Cross Platform Audio Output Library	100
ii	libfam-dev	2.7.0-6	client library to control the FAM daemon - d	100
rc	libksieve0	3.3.1-3	KDE mail/news message filtering library	100
ii	libuuid1	1.36release-1	universally unique id library	100
ii	libwmf-bin	0.2.8-1.1	Windows metafile conversion tools	100
ii	ppthtml	0.5.1-2	A program for converting Microsoft Power Poi	100
ii	python-mysqldb	1.2.1c2-1	A Python interface to MySQL	100
ii	sgml-base	1.26	SGML infrastructure and SGML catalog file su	100
ii	libart-2.0-2	2.3.17-1	Library of functions for 2D graphics - runti	99
ii	ethtool	02-janv	Display or change ethernet card settings	96
rc	fortune-mod	1.99.1-1	provides fortune cookies on demand	96
ii	knoppix-sounds	0.5-1	2 of the Space Sounds taken from the Mandrak	96
rc	liblua40	4.0-13	Main interpreter library for the Lua 4.0 pro	96
ii	pciutils-dev	2.1.11-15	Linux PCI Utilities (development files)	96
ii	speex	1.0.rel.4-1	The Speex Speech Codec	96
ii	tftpd-hpa	0.40-4	HPA's tftp server	96
ii	whiptail	0.51.6-20	Displays user-friendly dialog boxes from she	96
ii	xfonts-konsole	3.3.2-1	Fonts used by the KDE Konsole	96
ii	xzoom	0.3-16	magnify part of X display, with real-time up	96
rc	beep	1.2.2-14	Advanced pc-speaker beeper	92
ii	hexedit	1.2.2-1	view and edit files in hexadecimal or in ASC	92
ii	libpaper1	1.1.14-3	Library for handling paper characteristics	92
rc	libtolua0	4.0a-3	Tool to integrate C/C++ code with Lua - runt	92
ii	libxcursor1	1.1.3-1	X cursor management library	92
ii	ppmd	9.1-10	fast archiver program with good compression	92
ii	ssl-cert	1.0-11	Simple debconf wrapper for openssl	92
ii	v4l-conf	3.94-1	tool to configure video4linux drivers	92
ii	colorgcc	1.3.2.0-2	Colorizer for GCC warning/error messages	88
ii	libapm1	3.2.2-2	Library for interacting with APM driver in k	88
rc	liblua50	5.0.2-5	Extension library for the Lua 5.0 programmin	88
ii	libss2	1.36release-1	command-line interface parsing library	88
ii	libwrap0	7.6.dbs-6	Wietse Venema's TCP wrappers library	88
ii	libxml2-utils	2.6.16-2	XML utilities	88
ii	libxrender1	0.8.3-7	X Rendering Extension client library	88

rc	mysql-common	4.0.24-2	mysql database common files (e.g. /etc/mysql	88
ii	php4-pear-log	1.6.0-1.1	Log module for PEAR	88
ii	php4-yaz	1.0.2-1	Z39.50 Module for PHP	88
ii	poster	20020830-2	Create large posters out of PostScript pages	88
rc	radio	3.94-1	ncurses-based radio application	88
ii	doc-base	0.7.18	utilities to manage online documentation	85
ii	hostname	2.13	A utility to set/show the host name or domai	84
ii	knoppix-image	0.5-3	Shell GUIs for merging and creating a writ	84
ii	libesd0	0.2.35-2	Enlightened Sound Daemon - Shared libraries	84
ii	libjcode-perl	2.13-2	Perl library for Japanese character code con	84
ii	libnxcompext0	1.4.0-m2-1	NoMachine NX - NX compression library	84
ii	libsysfs1	1.2.0-5	interface library to sysfs	84
ii	libtextwrap1	0.1-1	text-wrapping library with i18n - runtime	84
ii	mt-st	0.8-1	Linux SCSI tape driver aware magnetic tape c	83
rc	aalib-bin	1.4p5-22	sample programs using aalib	80
ii	diffstat	1.35-1	produces graph of changes introduced by a di	80
ii	finger	0.17-7	user information lookup program	80
ii	freenx	0.2.8-0.2	FreeNX application/thin-client server based	80
ii	libartsc0-dev	1.3.2-2	aRts Sound system C support library (develop	80
ii	libident	0.22-2.2	simple RFC1413 client library - runtime	80
ii	libpaper-utils	1.1.14-3	Library for handling paper characteristics (	80
rc	emacs-en-common	1.4.16	Common facilities for all emacs-en	78
ii	giftrans	1.12.2-11	Convert any GIF file into a GIF89a	76
ii	libcomerr2	1.36release-1	common error description library	76
ii	libfam0c102	2.7.0-6	client library to control the FAM daemon	76
ii	libgtk2.0-bin	2.6.2-3	The programs for the GTK+ graphical user int	76
rc	libnids1	1.20-1	IP defragmentation TCP segment reassembly li	76
ii	libusb-0.1-4	0.1.10a-7	userspace USB programming library	76
ii	netpipe-tcp	3.6.2-1	A network performance tool using the TCP pro	76
ii	parted	1.6.21-1	The GNU Parted disk partition resizing progr	76
ii	php4-mysql	4.3.10-13	MySQL module for php4	76
ii	xfonts-artwiz	1.3-2	x11 fonts created by Artwiz, TigerT, and Dan	76
ii	xtv	1.1-7	View the screen of a remote X11 display	76
ii	lockfile-progs	0.1.10	Programs for locking and unlocking files and	73
ii	acpi	0.07-3	displays information on ACPI devices	72
ii	convertfs	20050113-1	in-place filesystem conversion	72
rc	etherwake	1.08-1	A little tool to send magic Wake-on-LAN pack	72
ii	genliloconf	0.1-3	simple utility for auto-generating of lilo.c	72
ii	libartsc0	1.3.2-2	aRts Sound system C support library	72
rc	libcanlock2	2b-3	library for creating and verifying Usenet ca	72
ii	libcapi20-2	3.3.0.20041110	libraries for CAPI support	72
ii	libgdbm3	1.8.3-2	GNU dbm database routines (runtime version)	72
rc	liblua40	4.0-13	Extension library for the Lua 4.0 programmin	72
ii	libpcd2	1.0.1	A library for reading PhotoCD images	72
ii	libxplc0.3.10	0.3.10-3.1	Light weight component system	72
ii	libzip-0-12	0.12.83-4	library providing read access on ZIP-archive	72
ii	netkit-ping	0.10-10	The ping utility from netkit	72
ii	unzoo	4.4-2	zoo archive extractor	72
ii	dd-rescue	1.02-1	error-tolerant version of dd for rescuing da	68
ii	dpkg-repack	1.19	puts an unpacked .deb file back together	68
rc	libieee1284-3	0.2.8-2	Cross-platform library for parallel port acc	68
ii	libsdl-net1.2	1.2.5-3	network library for Simple DirectMedia Layer	68
ii	perl-suid	5.8.4-6	Runs setuid Perl scripts	68

ii	php4-curl	4.3.10-13	CURL module for php4	68
ii	gpart	0.1h-4	Guess PC disk partition table, find lost par	67
ii	libpam-runtime	0.76-22	Runtime support for the PAM library	66
ii	bridge-utils	1.0.4-1	Utilities for configuring the Linux ethernet	65
ii	debsums	2.0.15	Verify installed package files against MD5 c	64
ii	fdflush	1.0.1.1	Flush out-of-date disk buffers	64
ii	libcap1	1.10-14	support for getting/setting POSIX.1e capabil	64
ii	rdate	1.4-6	sets the system's date from a remote host	64
ii	i810switch	0.6.2-2	Enables/disables video output to CRT/LCD on	62
ii	base-passwd	3.5.9	Debian base system master password and group	61
ii	xdelta	1.1.3-6	A diff utility which works with binary files	61
ii	libdm0	2.2.0-1	Data Management API runtime environment	60
ii	ppmtofb	0.32	Display netpbm graphics on Linux framebuffer	60
ii	timeout	1.11-6.1	Run a command with a time limit.	60
ii	knoppix-dma	0.5-2	Shell GUI for controlling DMA	56
ii	knoppix-swm	0.5-1	Start kpackage as root	56
rc	libnet0	1.0.2a-7	library for the construction and handling of	56
ii	checkmem	0.5-2	Simple script to check if enough memory is a	52
ii	dlocate	0.5-0.1	fast alternative to dpkg -L and dpkg -S	52
ii	gsfonts-x11	0.17	Make Ghostscript fonts available to X11	52
ii	atitvout	0.4-3	ATI TV Out Support Program	48
rc	btpin-knoppix	0.5-2	Shell GUI for entering bluetooth pin	48
ii	k3b-defaults	1.0-1	Default settings file for k3b	48
ii	kbdconfig	0.5-3	Lightweight keyboard configuration tool for	48
ii	libacl1	2.2.29-1	Access control list shared library	48
ii	libiw27	27-févr	Wireless tools - library	48
ii	libvorbisfile3	1.0.1-1	The Vorbis General Audio Compression Codec	48
ii	mbr	1.1.5-2	Master Boot Record for IBM-PC compatible com	48
ii	mouseconfig	0.5-2	Lightweight mouse configuration tool for Kno	48
ii	fttools	1.2-13.1	FreeType font utilities.	44
ii	libogg0	1.1.0-1	Ogg Bitstream Library	44
ii	php-dbase	4.3.3-2	The dbase module for PHP	44
ii	tftp	0.17-11	Trivial file transfer program.	44
ii	cpp	3.3.5-1	The GNU C preprocessor (cpp)	40
ii	euro-support-x	1.31	Help setting up euro character support in th	40
ii	libijs-0.35	0.35-1	IJS raster image transport protocol: shared	40
ii	usleep-knoppix	0.5-1	sleeps for a number of microseconds, see man	40
ii	liblockfile1	1.06	NFS-safe locking library, includes dotlockfi	38
ii	libattr1	2.4.21-1	Extended attribute shared library	36
ii	tidy	20040811-2	HTML syntax checker and reformatter	36
rc	artwiz-cursor	1.3-2	artwiz futuristic mouse cursor for x11	32
ii	menu-xdg	0.2	freedesktop.org menu compliant window manage	32
ii	s3switch	0.0.20030423-2	Manage the output device on S3 Savage chips	32
ii	unp	1.0.10	unpack (almost) everything with one command	32
ii	symlinks	1.2-4.1	scan/change symbolic links	29
ii	gcc	3.3.5-1	The GNU C compiler	28
ii	hotplug-utils	0.0.20020401-4	Linux Hotplug utility programs	28
ii	php-iconv	4.3.10-5	The Iconv module for PHP	28
ii	statserial	1.1-21	Displays serial port modem status lines server-side, HTML-embedded scripting	28
ii	php4	4.3.10-13	languag	24

ii	libraw1394-5	0.10.1-1.1	library for direct access to IEEE 1394 bus (	23
ii	update	2.11-4	daemon to periodically flush filesystem buff	20
ii	nxproxy	1.4.0-m2-1	NoMachine NX - X protocol compression proxy	16
ii	nxserver	0.2.8-0.2	FreeNX application/thin-client server based	16
ii	php-bz2	4.3.1-2	The bz2 module for PHP	12
ii	xpdf	3.00-12	Portable Document Format (PDF) suite	9
ii	g++	3.3.5-1	The GNU C++ compiler	8

4)

## VI ANNEXE B (le fichier 45xsession)

```
#!/bin/bash
PATH="/sbin:/bin:/usr/sbin:/usr/bin:/usr/X11R6/bin:/usr/games:/usr/local/bin:"
export PATH

umask 022

[ -n "$KDEDIR" ] || KDEDIR="/usr"
export KDEDIR

[ -n "$HOSTNAME" ] || HOSTNAME="$(hostname)"
export HOSTNAME

[ -z "$USER" ] && USER="$(id -nu)"
export USER

[ -z "$HOME" -o "$HOME" = "/" ] && HOME="/home/$USER"
export HOME

# Set default cursor (artwiz)
xsetroot -cursor_name left_ptr

# add at least _one_ entry to xauth
# remove when updated nxclient is available

xauth add $DISPLAY MIT-MAGIC-COOKIE-1 $(mcookie)

DONTCHANGE=""
[ -e $HOME/.kde/share/config/kdeglobals ] && DONTCHANGE="yes"

# Don't use this yet. We don't have TTF equivalents for all
# Fonts yet.
# QT_XFT=1
# export QT_XFT

# We need to source this so that the login screens get translated
[ -f /etc/profile ] && . /etc/profile

# Read default language/keyboard/background image
[ -f /etc/sysconfig/knoppix ] && . /etc/sysconfig/knoppix
[ -f /etc/sysconfig/i18n ] && . /etc/sysconfig/i18n
if [ -n "$LANG" ]; then
# Try to repair a KDE/locale bug
LA="$LANG"
L="{LANG%%@*}"
C=$(awk '/^"$LANG"/{print $2;exit 0}' /etc/locale.gen 2>/dev/null)
[ -n "$L" -a -n "$C" ] && LANG="$L.$C"
```

**ADULLACT**

**Email :** [contact@adullact.org](mailto:contact@adullact.org)

**24/06/2005**

**40**



```

LC_ALL="$LA"
export LANG
fi

if [ -n "$LC_ALL" ]; then
export LC_ALL
fi

[ -f /etc/sysconfig/keyboard ] && . /etc/sysconfig/keyboard

# Read Desktop, currently kde, gnome, larswm and twm are supported in this script
[ -f /etc/sysconfig/desktop ] && . /etc/sysconfig/desktop

# kde is the default
[ -z "$DESKTOP" ] && DESKTOP="kde"

# Copy profiles if not already present
rsync -Ha --ignore-existing
/etc/skel/{.acrorc,.Xdefaults,.gimp*,.gconf*,.bashrc,.nessus*,.links,.local,.config,.openoffice,.sversi
onrc,.lynx*,.qt,.xine,tmp} $HOME/ 2>/dev/null
[ "$USER" = "knoppix" ] && rsync -Ha --ignore-existing
/usr/share/knoppix/profile/{.gnupg,.acrorc,.Xdefaults,.bashrc,.nessus*,.links,.lynx*,.qt,.xine,tmp}
$HOME/ 2>/dev/null
[ "$USER" = "knoppix" -a -f /usr/share/knoppix/profile/.fonts.cache-1 ] && rsync -H --ignore-
existing /usr/share/knoppix/profile/.fonts.cache-1 $HOME/ 2>/dev/null

# We DO need the .gnome* directory for some programs that set permissions incorrectly
mkdir -p $HOME/.gnome/accels $HOME/.gnome_private

FREESPACE="$(df -k "$HOME" | awk '/^|^|^rootfs/{print $4}')"

if [ ! -e $HOME/.netscape -a "$FREESPACE" -gt 1500 ] && [ -d /etc/skel/.netscape -o -d
/usr/share/knoppix/profile/.netscape ]; then
rsync -Ha --ignore-existing /etc/skel/.netscape $HOME/ 2>/dev/null
[ "$USER" = "knoppix" ] && rsync -Ha --ignore-existing /usr/share/knoppix/profile/.netscape
$HOME/ 2>/dev/null
fi
if [ ! -e $HOME/.mozilla -a "$FREESPACE" -gt 1500 ] && [ -d /etc/skel/.mozilla -o -d
/usr/share/knoppix/profile/.mozilla ]; then
rsync -Ha --ignore-existing /etc/skel/.mozilla $HOME/ 2>/dev/null
[ "$USER" = "knoppix" ] && rsync -Ha --ignore-existing /usr/share/knoppix/profile/.mozilla
$HOME/ 2>/dev/null
fi

# It seems to be vital for galeon that a netscape bookmarks file exists
touch $HOME/.netscape/bookmarks.html >/dev/null 2>&1 || true

if [ -n "$LANGUAGE" ]; then
# Set mozilla and netscape preferred languages

```

```

for f in `ls -l $HOME/.mozilla/*/*/prefs.js $HOME/.netscape/preferences.js 2>/dev/null`; do
echo 'user_pref("intl.accept_languages", ""$LANGUAGE", en);' >>"$f"
case "$LANGUAGE" in
de|at|ch)
echo 'user_pref("general.useragent.contentlocale", "AT");' >>"$f"
echo 'user_pref("general.useragent.locale", "de-AT");' >>"$f" ;;
esac
# Else leave default language
done

for f in `ls -l $HOME/.mozilla/*/*/chrome/chrome.rdf.$LANGUAGE 2>/dev/null`; do
\mv -f "$f" "${f%}.${LANGUAGE}"
done

fi

# Star/OpenOffice preinstall, now done in soffice startscript
# [ -f /etc/skel/.sversionrc ] && \cp -au /etc/skel/.sversionrc $HOME/
# [ -f /etc/skel/.user60.rdb ] && \cp -au /etc/skel/.user60.rdb $HOME/
# [ -d /etc/skel/office -a "$FREESPACE" -gt 3500 ] && \
# rsync -Ha --ignore-existing /etc/skel/office $HOME/

playsound(){
# Play sound if soundcore module present (checking /dev/sndstat is unreliable)
OGGPLAY=/usr/bin/ogg123
PLAY=/usr/bin/wavp
[ -x "$PLAY" ] || PLAY=/usr/bin/play-sample
[ -x "$PLAY" ] || PLAY=/usr/bin/play
if [ -x "$OGGPLAY" -a -f /usr/share/sounds/startup.ogg ]; then
case "$(lsmod)" in *sound*) { $OGGPLAY -q -p 64 /usr/share/sounds/startup.ogg >/dev/null 2>&1
& } ; sleep 1 ;; esac
elif [ -f /usr/share/sounds/startup.wav -a -x "$PLAY" ]; then
case "$(lsmod)" in *sound*) { $PLAY /usr/share/sounds/startup.wav >/dev/null 2>&1 & } ; sleep 2
;; esac
fi
}

startkde(){
# Play sound
playsound

if [ -z "$DONTCHANGE" ]; then
# No persistent homedir, copy everything
rsync -Ha --ignore-existing /etc/skel/{.kde*,Desktop} $HOME/ 2>/dev/null
if [ "$USER" = "knoppix" ]; then
rsync -Ha --ignore-existing /usr/share/knoppix/profile/{.kde*,Desktop} $HOME/ 2>/dev/null
# Build ksycoca database for KDE speedup
[ -d /usr/share/knoppix/profile/var/tmp/kdecache-knoppix ] && rsync -Ha --ignore-existing
/usr/share/knoppix/profile/var/tmp/kdecache-knoppix/ /var/tmp/kdecache-knoppix 2>/dev/null

```

```

fi
# And sort icons first time (KDE bug?)
# Obsolete for KDE 3.2
#cat >>$HOME/.kde/Autostart/sorticons.desktop <<EOF
#[Desktop Entry]
#Name=Sort Icons
#Name[de]=Symbole aufräumen
#Exec=kfmclient sortDesktop
#Type=Application
#Icon=html
#Terminal=0
#EOF
else
# Only regenerate the config and Desktop files if missing
\mkdir -p $HOME/.kde/share $HOME/Desktop
rsync -Ha --ignore-existing /etc/skel/.kde/share/* $HOME/.kde/share/ 2>/dev/null
[ "$USER" = "knoppix" ] && rsync -Ha --ignore-existing /usr/share/knoppix/profile/.kde/share/*
$HOME/.kde/share/ 2>/dev/null
rsync -Ha --ignore-existing /etc/skel/Desktop/* $HOME/Desktop/ 2>/dev/null
[ "$USER" = "knoppix" ] && rsync -Ha --ignore-existing /usr/share/knoppix/profile/Desktop/*
$HOME/Desktop/ 2>/dev/null
rm -f $HOME/.kde/Autostart/sorticons.desktop
fi

# Check for /index.html (_en), or KNOPPIX/index.html (_en) on this CD
if [ -e /var/www/index.php ]; then
INDEXFILE="/var/www/index.php"
else
for i in index KNOPPIX/index; do
INDEXFILEDE="/cdrom/${i}.html"
INDEXFILEEN="/cdrom/${i}_en.html"
[ -e "$INDEXFILEEN" ] && INDEXFILE="$INDEXFILEEN" && [ "$LANGUAGE" != "de" ]
&& break
[ -e "$INDEXFILEDE" ] && INDEXFILE="$INDEXFILEDE" && [ "$LANGUAGE" = "de" ]
&& break
done
fi

#if [ -e "$INDEXFILE" ]; then
#cat >> $HOME/Desktop/KNOPPIX.desktop <<EOF
#[Desktop Entry]
#Name=KNOPPIX
# Exec=firefox openProfile webbrowsing $INDEXFILE
#Exec=firefox http://localhost/
#Type=Application
#Icon=html
#Terminal=0
#EOF
ln $HOME/Desktop/accueil.desktop $HOME/.kde/Autostart/showindex.desktop

```

```

#fi

# OpenWebSchool
OPENWEBSCHOOL="/cdrom/Demos/OpenWebSchool/index.html"
if [ -e "$OPENWEBSCHOOL" ]; then
cat >> $HOME/Desktop/OWS.desktop <<EOF
[Desktop Entry]
Name=OWS
Comment=Open Web School
Exec=netscape $OPENWEBSCHOOL
Type=Application
Icon=html
Terminal=0
EOF
fi

# LinuxTag
if [ -d /cdrom/LinuxTag ]; then
ln -sf /cdrom/LinuxTag "$HOME/Desktop/"
fi

# Setup language/keyboard
[ -d $HOME/.kde/share/config ] || mkdir -p $HOME/.kde/share/config
if [ -z "$DONTCHANGE" ]; then
touch $HOME/.kde/share/config/kdeglobals
rm -f $HOME/.kde/share/config/kdeglobals.tmp
sed -e 's/^Charset=.*$/Charset="$CHARSET"/' \
    -e 's/^Country=.*$/Country="$COUNTRY"/' \
    -e 's/^Language=.*$/Language="$LANGUAGE"/' \
    $HOME/.kde/share/config/kdeglobals > $HOME/.kde/share/config/kdeglobals.tmp
\mv -f $HOME/.kde/share/config/kdeglobals.tmp $HOME/.kde/share/config/kdeglobals
if [ -z "$BACKGROUND" -o ! -e "$BACKGROUND" ]; then
for i in jpg png gif; do
BACKGROUND=/usr/local/lib/knoppix.$i
[ -e "$BACKGROUND" ] && break
done
fi
sed -e 's|Wallpaper=.*|Wallpaper="$BACKGROUND"|g' \
    $HOME/.kde/share/config/kdesktoprc > $HOME/.kde/share/config/kdesktoprc.tmp
\mv -f $HOME/.kde/share/config/kdesktoprc.tmp $HOME/.kde/share/config/kdesktoprc
touch -r /etc/skel/.kde/share/config/kdeglobals $HOME/.kde/share/config/kdeglobals 2>/dev/null
touch $HOME/.kde/share/config/kxkbrc
rm -f $HOME/.kde/share/config/kxkbrc.tmp
sed -e 's/^Layout=.*$/Layout="$KDEKEYBOARD"/' \
    -e 's/^Additional=.*$/Additional="$KDEKEYBOARDS"/' \
    $HOME/.kde/share/config/kxkbrc > $HOME/.kde/share/config/kxkbrc.tmp
\mv -f $HOME/.kde/share/config/kxkbrc.tmp $HOME/.kde/share/config/kxkbrc
touch -r /etc/skel/.kde/share/config/kxkbrc $HOME/.kde/share/config/kxkbrc 2>/dev/null

```

```

# Check for custom splashscreen in /cdrom/KNOPPIX
if [ -d /cdrom/KNOPPIX/ksplash ]; then
[ -d $HOME/.kde/share/apps ] || mkdir -p $HOME/.kde/share/apps
ln -s /cdrom/KNOPPIX/ksplash $HOME/.kde/share/apps/
fi

fi

# Start KDE3
echo "kde_restart" >/etc/sysconfig/xsession-commands
export XDM_MANAGED="/etc/sysconfig/xsession-
commands,maysd,mayfn,sched,method=classic"

# This is /usr/bin/kde3
#!/bin/sh
#
# DEFAULT KDE STARTUP SCRIPT ( KDE-3.0.2 )
#

# Boot sequence:
#
# kdeinit is used to fork off processes which improves memory usage
# and startup time.
#
# * kdeinit starts the dcopserver and klauncher first.
# * Then kded is started. kded is responsible for keeping the sycoca
# database up to date. When an up to date database is present it goes
# into the background and the startup continues.
# * Then kdeinit starts kcmunit. kcmunit performs initialisation of
# certain devices according to the user's settings
#
# * Then ksmserver is started which in turn starts
# 1) the window manager (kwin)
# 2) everything in $KDEDIR/share/autostart (kdesktop, kicker, etc.)
# 3) the rest of the session.

# Set a left cursor instead of the standard X11 "X" cursor, since I've heard
# from some users that they're confused and don't know what to do. This is
# especially necessary on slow machines, where starting KDE takes one or two
# minutes until anything appears on the screen.
#
# Set the background to plain grey.
# The standard X background is nasty, causing moire effects and exploding
# people's heads. We use colours from the standard KDE palette for those with
# palettised displays.

#test "$XDM_MANAGED" || bkg="-solid #C0C0C0"
#xsetroot -cursor_name left_ptr $bkg

```

```
# The user's personal KDE directory is usually ~/.kde, but this setting
# may be overridden by setting KDEHOME.
```

```
kdehome="$HOME/.kde"
[ -n "$KDEHOME" ] && kdehome="$KDEHOME"
```

```
# Activate the kde font directories.
```

```
#
```

```
# There are 4 directories that may be used for supplying fonts for KDE.
```

```
#
```

```
# There are two system directories. These belong to the administrator.
```

```
# There are two user directories, where the user may add her own fonts.
```

```
#
```

```
# The 'override' versions are for fonts that should come first in the list,
```

```
# i.e. if you have a font in your 'override' directory, it will be used in
```

```
# preference to any other.
```

```
#
```

```
# The preference order looks like this:
```

```
# user override, system override, X, user, system
```

```
#
```

```
# Where X is the original font database that was set up before this script
```

```
# runs.
```

```
#usr_odir=$kdehome/share/fonts/override
```

```
#usr_fdir=$kdehome/share/fonts
```

```
#if test -n "$KDEDIRS"; then
```

```
# kdedirs_first=`echo $KDEDIRS|sed -e 's/:.*//`
```

```
# sys_odir=$kdedirs_first/share/fonts/override
```

```
# sys_fdir=$kdedirs_first/share/fonts
```

```
#else
```

```
# sys_odir=$KDEDIR/share/fonts/override
```

```
# sys_fdir=$KDEDIR/share/fonts
```

```
#fi
```

```
# We run mkfontdir on the user's font dirs (if we have permission) to pick
```

```
# up any new fonts they may have installed. If mkfontdir fails, we still
```

```
# add the user's dirs to the font path, as they might simply have been made
```

```
# read-only by the administrator, for whatever reason.
```

```
#test -d $usr_odir && (mkfontdir $usr_odir ; xset +fp $usr_odir)
```

```
#test -d $sys_odir && xset +fp $sys_odir
```

```
#test -d $usr_fdir && (mkfontdir $usr_fdir ; xset fp+ $usr_fdir)
```

```
#test -d $sys_fdir && xset fp+ $sys_fdir
```

```
#
```

```
# Add any user-installed font directories to the X font path
```

```
#kde_fontsdire=$kdehome/share/fonts
```

```
#kde_fontpaths=$kde_fontsdire/fontpaths
```

```

#if test -r $kde_fontpaths ; then
#   for fpath in `cat $kde_fontpaths | grep -v '#'` ; do
#       if test -s $fpath/fonts.dir ; then
#           xset fp+ $fpath
#       fi
#   done
#fi

# Ask X11 to rebuild its font list.
#xset fp rehash

#
# Get Ghostscript to look into user's KDE fonts dir for additional Fontmap
#if test -n "$GS_LIB" ; then
#   GS_LIB=$kde_fontsdire:GS_LIB
#   export GS_LIB
#else
#   GS_LIB=$kde_fontsdire
#   export GS_LIB
#fi

# Link "tmp" resource to directory in /tmp
# Creates a directory /tmp/kde-$USER and links $KDEHOME/tmp-$HOSTNAME to it.
lnusertemp tmp >/dev/null

# Link "socket" resource to directory in /tmp
# Creates a directory /tmp/ksocket-$USER and links $KDEHOME/socket-$HOSTNAME to it.
lnusertemp socket >/dev/null

# In case of dcop sockets left by a previous session, cleanup
# Should not be necessary for Knoppix.
# dcopserver_shutdown

# run KPersonalizer before the session, if this is the first login
# grep 'FirstLogin=false' $kdehome/share/config/kpersonalizerrc >/dev/null 2>/dev/null
# if test $? -ne 0; then
#   # start only dcopserver, don't start whole kdeinit (takes too long)
#   dcopserver
#   kwin &
#   kpersonalizer --before-session
#   # handle kpersonalizer restarts (language change)
#   while test $? -eq 1; do
#       kpersonalizer --r --before-session
#   done
#   dcopserver_shutdown
#   # shutdown will also make kwin quit, give it time to do so
#   sleep 1
# fi

```

```

# load the splashscreen and progress indicator
LD_BIND_NOW=true ksplash --nodcop
sleep 2

# Create automatic Desktop icons
mkdesktophdicons

# We set LD_BIND_NOW to increase the efficiency of kdeinit.
# kdeinit unsets this variable before loading applications.
LD_BIND_NOW=true kdeinit +kcmint +knotify || \
{ xmessage -geometry 500x100 "Couldn't start kdeinit. Check your installation."; return 1; }

# finally, give the session control to the session manager
# Syntax: ksmserver [--restore] [--windowmanager <wm>]
# if no windowmanager is specified, ksmserver will ensure kwin is started.
# [--restore] should be controlled by kdm
# kwrapper is used to reduce startup time and memory usage
kwrapper ksmserver
if [ "$?" -eq 255 ]; then
xmessage -geometry 500x100 "Couldn't start ksmserver. Check your installation."
return 1
fi

# Clean up - normally not necessary when running from CD
( kdeinit_shutdown ; dcopserver_shutdown ; artsshell -q terminate ) >/dev/null 2>&1 </dev/null
# EOF /usr/bin/kde3
killall kdeinit 2>/dev/null
exit 0
}
# End startkde

# starttwm: This is also the error fallback windowmanager. It should display
# an error message if it was started as such.
# Parameters: "reasoncode" "reasoncode-specific description"
starttwm(){

XTERM=rxvt
type -path rxvt >/dev/null 2>&1 || XTERM=xterm
$XTERM -geometry +0-0 -bg black -fg green -T Shell &

MESSAGE=""
if [ -n "$1" ]; then
case "$1" in
lowmem)
case "$LANGUAGE" in
de|at|ch) MESSAGE="
Nicht genug Speicher zum Start von $DESKTOP!
(Mindestens $2 MB benötigt.)

```



Starte stattdessen den TWM Windowmanager.

Achtung: Nicht alle Programme im linke-Maustaste-Menü werden funktionieren!

"

::

es) MESSAGE="

No hay suficiente memoria para arrancar \$DESKTOP!

(Se necesitan al menos \$2 MB.)

Usando el gestor de ventanas TWM en su lugar.

Aviso: ¡No todos los programas en el menú que aparece al pulsar el botón izquierdo del ratón funcionarán aquí!

"

::

\*) MESSAGE="

Not enough memory to start \$DESKTOP!

(At least \$2 MB required.)

Using TWM windowmanager instead.

Caution: Not all programs in the left-Mousebutton-Menu will work here!

"

::

esac

::

invalidwm)

case "\$LANGUAGE" in

de|at|ch) MESSAGE="

Desktop-Manager '\$DESKTOP' wird nicht unterstützt!

Starte stattdessen den TWM Windowmanager.

Achtung: Nicht alle Programme im linke-Maustaste-Menü werden funktionieren!

"

::

es) MESSAGE="

El gestor de ventanas '\$DESKTOP' no esta soportado!

Usando el gestor de ventanas TWM en su lugar.

Aviso: ¡No todos los programas en el menú que aparece al pulsar el botón izquierdo del ratón funcionarán aquí!

"

::

\*) MESSAGE="

Desktop manager '\$DESKTOP' is not supported!

Using TWM windowmanager instead.

Caution: Not all programs in  
the left-Mousebutton-Menu will  
work here!

```
"
    ;;
    esac
    ;;
    esac
fi

if [ -n "$MESSAGE" ]; then
( xmessage -geometry -0+0 "
$MESSAGE
"
) &
sleep 4
fi

playsound
exec twm
}

startgnome(){

type gnome-session >/dev/null 2>&1 || starttwm
rsync -Ha --ignore-existing
/etc/skel/{.gnome*,.gtk*,.metacity*,GNUSTep,.sawfish,.nautilus,Nautilus} $HOME/ 2>/dev/null
[ "$USER" = "knoppix" ] && rsync -Ha --ignore-existing
/usr/share/knoppix/profile/{.gnome*,GNUSTep,.sawfish,.nautilus,Nautilus} $HOME/ 2>/dev/null
#sed -e 's/^font=.*$/-fixed-medium-r-normal-*-14-*-*-*-*-$CHARSET"/g' \
# $HOME/.gnome/terminal > $HOME/.gnome/terminal.tmp
#mv -f $HOME/.gnome/terminal.tmp $HOME/.gnome/terminal
# Add HD partitions to GNOME desktop
#rm -f $HOME/.gnome-desktop/[hs]d[a-z][1-9]* 2>/dev/null
#[ ! -d $HOME/.gnome-desktop ] && mkdir -p $HOME/.gnome-desktop
#[ -f /cdrom/KNOPPIX/KNOPPIX ] && ln -s /cdrom $HOME/.gnome-desktop/ 2>/dev/null
#HDS="" `ls -ld /mnt/[hs]d[a-z][1-9]* /mnt/cdrom* 2>/dev/null`"
#[ -n "$HDS" ] && ln -s $HDS $HOME/.gnome-desktop/ 2>/dev/null
#OPENWEBSCHOOL="/cdrom/Demos/OpenWebSchool"
#[ -e "$OPENWEBSCHOOL" ] && ln -s "$OPENWEBSCHOOL" $HOME/.gnome-desktop/OWS
playsound

# Create automatic Desktop icons
# mkdesktophdicons
# nautilus2 cannot handle KDE icons correctly, so we have to remove them to avoid confusion
find $HOME/Desktop -type f -size -2k -maxdepth 1 | while read f; do grep -qi '^\[.*Desktop
Entry.*\]' "$f" && rm -f "$f"; done 2>/dev/null
```

```

# Remove old .gnome-desktop
mv -f .gnome-desktop .gnome-desktop.removed 2>/dev/null

# Nautilus2 and others seem to depend on XFT
# GDK_USE_XFT=1 exec gnome-session --purge-delay=4000
GDK_USE_XFT=1 exec gnome-session
}

startlarswm(){
[ -e "$HOME"/.larswmrc ] || rsync -Ha --ignore-existing /etc/skel/.larswmrc $HOME/ 2>/dev/null
playsound
exec larswm
}

startwindowmaker(){
# Create automatic Desktop icons
mkdesktophdicons

playsound
GDK_USE_XFT=1 exec wmaker
}

starticewm(){
# Create automatic Desktop icons
mkdesktophdicons

playsound
GDK_USE_XFT=1 exec icewm
}

startfluxbox(){
# Create automatic Desktop icons
mkdesktophdicons

playsound
GDK_USE_XFT=1 exec fluxbox
}

startenlightenment(){
# Create automatic Desktop icons
mkdesktophdicons

playsound
GDK_USE_XFT=1 exec enlightenment
}

startxfce(){
# Create automatic Desktop icons
mkdesktophdicons

```

playsound

```
GDK_USE_XFT=1
export GDK_USE_XFT
```

```
[ -e $HOME/.xfce ] || mkdir $HOME/.xfce
XFWM=xfwm
```

```
exec $XFWM
}
```

```
startxfce4(){
# Create automatic Desktop icons
mkdesktophdicons
```

playsound

```
GDK_USE_XFT=1
export GDK_USE_XFT
```

```
# XFCE4 setup
if [ ! -e $HOME/.xfce4 ]; then
rsync -Ha --ignore-existing /etc/skel/.xf* /usr/share/knoppix/profile/.xf* $HOME/ 2>/dev/null
[ ! -d $HOME/.xfce4 ] && mkdir -p $HOME/.xfce4
echo "$BACKGROUND
auto" >$HOME/.xfce4/xfbdrc
fi
# Start the background graphics daemon
exec xfb4 >/dev/null 2>&1 &
# This one may not exist yet - xfce4 settings manager
exec xfce-mcs-manager >/dev/null 2>&1 &
# The window manager component
exec xfwm4 --daemon >/dev/null 2>&1 &
exec xftaskbar4 >/dev/null 2>&1 &
exec xfdeskmnu -button=3 >/dev/null 2>&1 &
exec xfdesktop >/dev/null 2>&1 &
exec xfce4-iconbox >/dev/null 2>&1 &
# The background menu is started last
XFWM=xfce4-panel
exec $XFWM
}
```

```
stringinstring(){
case "$2" in *$1*) return 0;; esac
return 1
}
```

# Reread boot command line; echo last parameter's argument or return false.

```

getbootparam(){
stringinstring " $1=" "$CMDLINE" || return 1
result="{CMDLINE###$1}"
result="{result%%[ ]*}"
echo "$result"
return 0
}

startkiosk()
{
playsound
GDK_USE_XFT=1

CMDLINE=$(cat /proc/cmdline) # FIXME!

url=$(getbootparam url)

cat <<EOF > $HOME/kiosk.html
<html>
<head>
<script language="javascript">
<!--
function StartKiosk(){
window.open("$url", "", "fullscreen,toolbar=yes,scrollbars=yes");
timeoutID=setTimeout("CloseLauncher()", 100);
}
function CloseLauncher(){
window.close();
}
-->
</script>
</head>
<body onLoad="StartKiosk()">
</body>
</html>
EOF

echo 'user_pref("privacy.popups.first_popup", false);' >>
$HOME/.mozilla/knoppix/ujixazk6.slt/prefs.js
echo 'user_pref("dom.allow_scripts_to_close_windows", true);' >>
$HOME/.mozilla/knoppix/ujixazk6.slt/prefs.js
echo 'user_pref("browser.toolbars.showbutton.print", false);' >>
$HOME/.mozilla/knoppix/ujixazk6.slt/prefs.js

while [ "$DESKTOP" = "kiosk" -o "$DESKTOP" = "KIOSK" ]
do
mozilla $HOME/kiosk.html
[ -f /etc/sysconfig/desktop ] && . /etc/sysconfig/desktop

```

```

done
}

startrdp()
{
  CMDLINE=$(cat /proc/cmdline) # FIXME!

  rdp_host=$(getbootparam rdp_host)

  #start some window manager
  kwin &

  # start rdesktop
  rdesktop "$rdp_host" || xmessage "Could not connect to server $rdp_host."
}

startnx()
{
  CMDLINE=$(cat /proc/cmdline) # FIXME!

  # Create .nx config ...
  mkdir -p $HOME/.nx/config

  nx_ssl=$(getbootparam nx_ssl)

  nx_desktop=$(getbootparam nx_desktop)
  nx_link_speed=$(getbootparam nx_link_speed)
  nx_resolution=$(getbootparam nx_resolution)
  nx_server_host=$(getbootparam nx_server_host)
  nx_server_port=$(getbootparam nx_server_port)
  nx_session=$(getbootparam nx_session)

  nx_auth=$(getbootparam nx_auth)
  nx_password=$(getbootparam nx_password)
  nx_user=$(getbootparam nx_user)

  # FIXME for 1.4.0
  cat <<EOF > $HOME/.nx/config/termserv.conf
<!DOCTYPE KSettings>
<KSettings application="nxclient" version="1.3" >
<group name="Advanced" >
<option key="Enable SSL encryption" value="{nx_ssl:-true}" />
</group>
<group name="General" >
<option key="Desktop" value="{nx_desktop:-KDE}" />
<option key="Link speed" value="{nx_link_speed:-modem}" />
<option key="Resolution" value="{nx_resolution:-fullscreen}" />
<option key="Resolution height" value="600" />
<option key="Resolution width" value="800" />

```

```

<option key="Server host" value="{nx_server_host:-localhost}" />
<option key="Server port" value="{nx_server_port:-22}" />
<option key="Session" value="{nx_session:-Unix}" />
</group>
<group name="Login" >
<option key="Auth" value="{nx_auth}" />
<option key="Password" value="{nx_password}" />
<option key="User" value="{nx_user:-nxuser}" />
</group>
<group name="VNC Session" >
<option key="Password" value="" />
</group>
<group name="Windows Session" >
<option key="Password" value="" />
</group>
</KSettings>
EOF

```

```

cat <<EOF > $HOME/.nx/config/nxclient.conf
<!DOCTYPE NXClientSettings>
<NXClientSettings application="nxclient" version="1.3" >
<group name="General" >
<option key="Personal NX dir" value="/home/knoppix/.nx" />
</group>
</NXClientSettings>
EOF

```

```

#start some window manager
kwin &

# start nxclient and do that in an endless loop
while true;
do
  nxclient --session "termserv"
  sleep 2
done
}

# Check for sufficient Real Memory for starting KDE or GNOME
# (We don't want to end in a swap-a-lot loop.)
REALMEM="$(awk '/MemTotal/{print $2}' /proc/meminfo)"
FREEMEM="$(awk 'BEGIN{m=0};/MemFree|Cached|SwapFree/{m+= $2};END{print m}'
/proc/meminfo)"
if [ "$REALMEM" -lt 25000 ]; then
startwm
else
case "$DESKTOP" in
  kde|KDE) [ "$FREEMEM" -ge "60000" ] && startkde || startwm lowmem 82 ;;
  gnome|GNOME) [ "$FREEMEM" -ge "45000" ] && startgnome || startwm lowmem 67 ;;
)

```

```
larswm|LARSWM) [ "$FREEMEM" -ge "35000" ] && startlarswm || starttwm lowmem 64; ;;
enlightenment|ENLIGHTENMENT) [ "$FREEMEM" -ge "35000" ] && startenlightenment ||
starttwm lowmem 64; ;;
fluxbox|FLUXBOX) [ "$FREEMEM" -ge "35000" ] && startfluxbox || starttwm lowmem 64; ;;
  xfce|xfce3|XFCE|XFCE3) [ "$FREEMEM" -ge "35000" ] && startxfce || starttwm lowmem 64;
;;
  xfce4|XFCE4) [ "$FREEMEM" -ge "35000" ] && startxfce4 || starttwm lowmem 64; ;;
windowmaker|wmaker|WINDOWMAKER|WMAKER) [ "$FREEMEM" -ge "35000" ] &&
startwindowmaker || starttwm lowmem 64; ;;
  icewm|ICEWM) [ "$FREEMEM" -ge "35000" ] && starticewm || starttwm lowmem 64; ;;
    nx|NX) startnx ;;
    kiosk|kiosk) startkiosk ;;
    rdp|rdp) startrdp ;;
    twm|TWM) starttwm; ;;
    *) starttwm invalidwm; ;;
esac
fi
```



## VII ANNEXE C (fichier zope.conf)

```
....
%define INSTANCE /home/zope/zope.tana
%define ZOPE /opt/Zope-2.7.3
...
# Directive: debug-mode
# Default: on
debug-mode off
...
# Directive: effective-user
...
# Default: unset
effective-user zope
...
# Directive: zserver-threads
...
# Default: 4
zserver-threads 6
...
<http-server>
# valid keys are "address" and "force-connection-close"
address 9080
# force-connection-close on

</http-server>
#<ftp-server>
# # valid key is "address"
# address 8021
#</ftp-server>
```